



Apple® IIcs

# SAM2 Reference Manual

**SAM2 v2.0.9**

---

(Son of SAM)  
Born from the original  
Spectrum™ Automated Mailer  
Copyright © 2010-2018 Ewen Wannop



*Spectrum  
Automated  
Mailer*

© 2000 Ewen Wannop

---

**Dedicated to the memory of Joe Kohn 1947-2010**

SAM2 is Freeware and Copyright © 2010-2021 Ewen Wannop

SAM2 and its supporting documentation may not be printed,  
copied, or distributed for profit.

Distributing and/or archiving is restricted while in an electronic form.

Any “free” distribution must be given permission by Ewen Wannop  
in advance -- please contact via email by sending mail to:

[spectrumdaddy@speccie.uk](mailto:spectrumdaddy@speccie.uk)

There is no guarantee that the right to redistribute this material  
will be granted. The contents of this document may not be  
reprinted in part or in whole.



# Contents



---

## **Preface**

Welcome	4
---------	---

## **Setting up SAM2**

Requirements	5
Installation	6
Running SAM2	7

## **The Menus**

Quick Reference	8
Keyboard Shortcuts	10

## **Working with SAM2**

Setting things up:	12
Creating Accounts	15
Account Configuration	17
Server Configuration	19
Composing Messages	20
Reading Messages	25
General Functions	30

## **Advanced Features**

Edit Address Book	31
Edit Signature	33
Edit Filters	33
Edit Folders	35
Message Threads	36
General Note	36

## **Appendix**

Glossary	38
Links	39

---



## Preface



---

# Welcome to SAM2 son of SAM

### Welcome

Some ten years ago, while I was writing a number of Spectrum script sets, I had a suggestion from Joe Kohn that I should write an email client. As a result, I wrote the email script set which I called SAM. The script set was originally available either bundled with Spectrum, or could be purchased separately.

Like all Spectrum script sets, SAM suffered from the same problem as Basic programs, in that they have to run under an interpreted language. SAM therefore ran quite slowly compared with an assembly language program, and was fairly limited in its features. Ten years on, we expect much more from an email client.

In recent years I have been revisiting many of my old Spectrum script sets, and rewriting them in the faster ORCA/M assembly language. These programs are now being issued as Freeware through my web site. The time has now come to turn to updating SAM, and evolve it into SAM2, a much more powerful email client than its predecessor.

Although SAM2 does much more than SAM, it still had to be written within the limitations of the IIGS. SAM2 handles most mail servers, but not all. Thanks to the legacy from coding SIS, SAM2 supports an HTML display where appropriate, but like SIS, SAM2 cannot display embedded graphics. SAM2 supports multiple email accounts, saving into multiple Inbox folders, and powerful filters that allow you to easily sort mail, or trap junk or spam mail.

SAM2 draws heavily on code from the original SAM, SAFE2, and the BinHQX, Browser, and Database XCMDs.

To report bugs, or suggest new features, email: <[spectrumdaddy@speccie.uk](mailto:spectrumdaddy@speccie.uk)>



# Setup



---

## SAM2 Email Client

### Requirements

SAM2 is an email client which uses POP3 and SMTP mail servers to retrieve and send email. SAM2 supports multiple email accounts, multiple Mailboxes, an Address Book, Filters, and an HTML display where appropriate.

To use SAM2, you will need a IIGS running System 6.0.1, Marinetti 3.0.b3 or later, and a connection to the Internet. SAM2 works best with an Ethernet connection, such as the Uthernet card, though it can be used with any TCP/IP Link Layer that Marinetti supports.

Your IIGS should have a minimum of 1Mb of RAM, though you will find 4-5Mb is best. Your IIGS should preferably be accelerated, the faster the better, and should have a hard disk, or memory card, with sufficient free space to handle the amount of email you think you might receive!

You will also need at least one email account that supports POP3 and SMTP servers. This includes MobileMe, and email accounts that come with your ISP.

Note that SAM2 does not support IMAP or SSL connections for reading and sending email, but does support the AUTH PLAIN username/password protocol used for logging into SMTP servers to send email.

To obtain SAM2, NiftySpell, Babelfish™, the HTML Tool, the Uthernet Link Layer, and any of my other software::

<http://speccie.uk>

To obtain the latest version of the Marinetti TCP/IP stack:

<http://www.apple2.org/marinetti/>

To find out about, and order an Uthernet card:

<http://www.a2retrosystems.com/>

---

## Installation

In addition to Marinetti, SAM2 requires some custom System Tools, and some Fonts, to be installed. You may already have these installed, but if not, they are supplied in the SAM2 archive. Make sure that you do not overwrite any newer versions of these files. In most cases, if you just drop the files onto the System folder, they should automatically be put into the correct folder.

### **SAM2.Archive folder contents:**

#### HTML Tool folder:

Put Tool130 into the System/Tools folder.

#### TimeZone folder:

Put the TimeZone CDEV into the System/CDevs folder.

Put Tool056 into the System/Tools folder.

#### Hierarchic folder:

Put the Hierarchic CDEV into the System/CDevs folder.

#### Sounds Folder:

Put SP.Snds.Aux into the System/Sounds folder.

#### Fonts folder:

Put all thirty Font files into the System/Fonts folder.

#### UndoManager folder:

If not already installed, copy TOOL132 to the System/Tools folder and reboot.

#### SAM2 folder:

Move the SAM2 folder to the disk where you wish to run SAM2. This can be anywhere you like on your system, but should have plenty of free disk space to allow for the emails you will receive.

## Marinetti

Install and configure Marinetti to suit your Internet connection. If you need the Sweet16, or Uthernet Link Layers, the latest versions can be downloaded from my web site:

<http://speccie.uk>

---

## **NiftySpell**

If NiftySpell has been installed, SAM2 will support spell checking directly from the New Mail and Editor windows. You need to first install NiftySpell v1.1, which can be downloaded from my web site:

<http://speccie.uk>

## **Babelfish™**

If Babelfish™ has been installed, SAM2 will support importing and exporting files through Babelfish™ from the New Mail and Editor windows, and exporting through Babelfish™ from the message viewing windows. You need to first install Babelfish™, which can be downloaded from my web site:

<http://speccie.uk>

## **Running SAM2**

Double click SAM2 to run the program. Alternatively, you can create an alias of SAM2, and put it on your desktop for easier access.

If Check File 1.0.1 or later is installed, SAM2 will check for updates at startup. You can disable this check in Settings, or by clicking Ignore when you see an update Alert.

## **IMAP & SSL**

Many email accounts, such as those from Apple & Google, for security reasons are now moving over to IMAP, or require an SSL connection. Unfortunately SSL is not yet available for Marinetti, and for the moment, IMAP is beyond the scope of SAM2.

SAM2 is only able to handle the older POP3 mail servers for reading mail, but may be able to use an IMAP SMTP server to send mail, provided the server does not require an SSL connection.



# Menus



---

## SAM2 Quick Reference

### The Menus

#### Apple Menu

##### *About SAM2*

Displays the version number and copyright information.

#### File Menu

##### *Check Mail*

Checks all active email accounts for any new mail.

##### *Send Queued Messages*

Sends any queued messages.

##### *Insert Text File*

Inserts a text file into a message while composing or replying to mail.

##### *Babelfish™ ►*

*Import* - Inserts a text file into the current message or editor.

*Export* - Entire text through the available Babelfish™ filters.

##### *Close*

Closes the currently open window.

##### *Save As*

Saves text from the current window to disk.

##### *Page Setup*

Opens the standard Print Setup dialog.

##### *Print*

Prints text from the current window to the selected printer.

##### *Quit*

Quits SAM2.



---

## **Edit Menu**

### *Undo/Redo*

For text controls, Undo or Redo the last 32 changes in text.

### *Cut*

Cuts the selected text, and places it on the Clipboard.

### *Copy*

Copies any selected text to the Clipboard.

### *Paste*

Pastes any text on the Clipboard at the cursor point, replacing any selected text.

### *Select All*

Selects all text within the document or edit box.

### *Show Clipboard*

Displays the current contents of the Clipboard.

### *Editor & Choose Font*

Simple text editor.

### *Find/Replace*

Opens either the Find/Replace dialog, or the Find dialog, depending on context.

### *Spell Check*

Spell checks the current selection or window using NiftySpell.

## **Message Menu**

### *New E-Mail message*

Compose a new email message.

### *Open Message*

Opens and displays a selected message from the selected Folder list.

### *Reply To*

Replies to the sender of the current message.

### *Reply To All*

Replies to all recipients of the current message.

### *Forward Message*

Forwards the current message to a new recipient.

### *Redirect Message*

Redirects the current message to a new recipient.

### *Delete Message*

Deletes the selected message or messages.

---

*Mark as Junk*

Moves the message to the Junk folder and creates a Junk Filter.

*Change Subject*

Changes the Subject line of an received message.

*Messages Threads*

Searches for a target string in the selected message Folder.

*Attach File*

Attaches a file to a message.

*Extract Attached Files*

Extracts embedded files from a message.

*Download Linked File*

Downloads a file from a URL link.

*Add To Address Book*

Adds the selected address to the Address Book.

## **Mailboxes Menu**

*Inbox*

Displays a list of messages in the Inbox.

*Outbox*

Displays a list of messages in the Outbox.

*Folders* ►

Displays a list of messages in the selected Folder.

*Sent Messages*

Displays a list of messages in the Sent Messages folder.

## **Options Menu**

*Settings*

Opens the preferences dialog.

*Edit Accounts*

Create and edit Mail Accounts.

*Manage Folders*

Create and edit Mailbox Folders.

*Edit Filters*

Create and edit Filters.

*Edit Signature*

Creates an optional Signature.

---

*Edit Address Book*

Add and edit addresses in the Address Book.

*View SAM2 Log*

Views the actions and error message log.

---

## **Keyboard Shortcuts**

OA-H

Toggles minimising HTML display, to display in a mono sized font.

OA-M

Toggles to ignore HTML content, and display the text component if present.

OA-U

Toggles the display of the raw message data in the received message.

OA-?

Displays the pathname of an attached file.

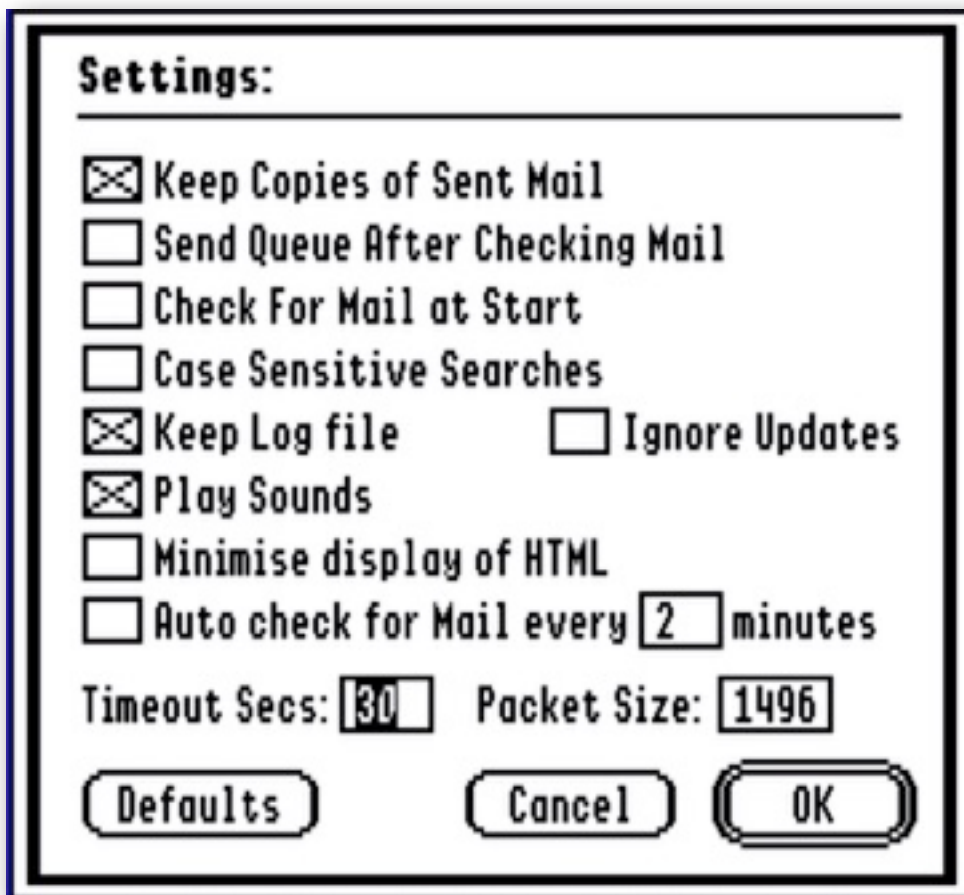
# Basics

## Working with SAM2

### Setting Things Up

Before you can send or receive mail with SAM2 you must first configure your email accounts, as well as adjusting the global settings to suit your needs.

#### Options Menu - Settings:



The above shows the default settings. The original settings can be restored by clicking the 'Defaults' button.

---

### **Keep Copies of Sent Mail**

If you don't want to rely on keeping your mail on a remote mail server, check this box, and copies of mail that you send will be kept locally.

Note that as only references to attached files are kept within a message before and after it is sent, any attached files will not be saved along with the archived message. While later viewing the message from the Sent Messages menu, the original path of an attached file can be referenced by selecting the item, and pressing OA-?.

### **Send Queue After Checking Mail**

If you check this box, after checking for new mail, any mail in the Send Queue will be sent. This is useful for those SMTP servers that require you to have first logged in and read mail before the server will open a 'window' to let you send mail. In such a case, Checking for Mail, will always ensure that any queued mail will be sent.

### **Check For Mail at Start**

If you check this box SAM2 automatically checks for mail when it starts up.

### **Case Sensitive Searches**

If this box is checked, then any Filter searches will respect the upper and lower case of characters. Uncheck this box to allow these searches to ignore upper and lower case.

Note this setting does not apply to the Find & Replace, and Message Threads dialogs, as they have their own Case Sensitive checkbox.

### **Keep Log File**

Some error messages will automatically be added to the Log File regardless of this setting, but by checking this box, a complete record of incoming and outgoing mail actions will be kept.

The log file is automatically rotated each month, and a fresh Log file created.

### **Ignore Updates**

Check this box to disable the self-check for updates at Startup. The box will be checked if you have clicked Ignore in an Alert showing an update is available.

### **Play Sounds**

Check this box to have the various send and receive mail actions accompanied by sounds. Note you must first have installed the supplied sounds file.

---

## **Minimise Display of HTML**

Some mail messages may include both HTML and plain versions of the message text, some messages may only be plain text, and some may only be HTML. SAM2 will normally display any HTML if it is present, but if the display contains large fonts, or complex graphics, the message might not be easy to read. By checking this box, SAM2 will always try to minimise the display of HTML, by either showing the text component if present, or the HTML in a mono sized font.

Note that while viewing a message, you can press OA-H to achieve this same effect, and minimise HTML, or press OA-M to ignore HTML content, and display the plain text of it is present.

## **Autocheck For Mail**

SAM2 can periodically automatically check for mail. The check can only be made while there are no lists or display windows open. Check this box, and then set the interval to a suitable delay to make the checks. If you have Sounds turned on, you will get an audible warning when new mail arrives. If any messages are received, then the appropriate Inbox for the last message to be received will be opened.

Close any open windows to resume auto checking for new mail.

## **Timeout Seconds**

If a server does not respond, SAM2 might wait for some time before it gives up waiting for a response. Set the number of seconds here that you would like SAM2 to wait before giving up trying.

Note that if SAM2 hangs while checking for mail, or while sending mail, you can always abort the process by pressing OA-Period.

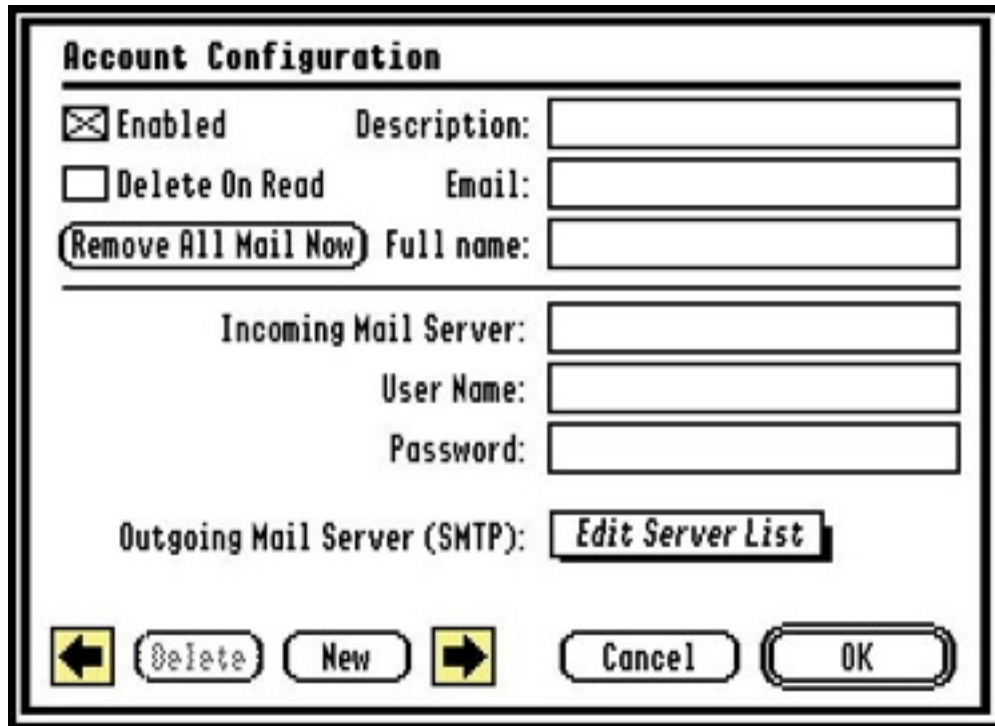
## **Packet Size**

You may find that you can optimise the speed of sending large messages by adjusting the packet size to suit your router and your network. In most circumstances, the default value should be the best setting. If your router uses a different value for the MTU or Packet Size, then you can adjust the setting here to match that of your router.

---

## Creating Mail Accounts

You will need at least one active email account before SAM2 will be able to send or receive mail. Apart from disk space, there is no practical limit to the number of accounts you can create in SAM2:



The screenshot shows the 'Account Configuration' dialog box. It has a title bar and a border. The content is organized into several sections:

- Account Configuration** (Title)
- Enabled** (checkbox)
- Delete On Read** (checkbox)
- (Remove All Mail Now)** (button)
- Description:** (text field)
- Email:** (text field)
- Full name:** (text field)
- Incoming Mail Server:** (text field)
- User Name:** (text field)
- Password:** (text field)
- Outgoing Mail Server (SMTP):** (text field) with an **Edit Server List** button next to it.
- Navigation buttons at the bottom: **←** (yellow arrow), **Delete**, **New**, **→** (yellow arrow), **Cancel**, and **OK**.

### Options Menu - Edit Accounts:

On selecting the Edit Accounts menu, you will see the dialog above. From this dialog, you can create and edit mail accounts, moving through each of them using the yellow arrow keys. If you have made any changes to an entry, you will first be asked to confirm that you wish to keep those changes before you can move on. If a field is empty, or incorrectly entered, you will hear a beep, and will need to correct the mistake, or can choose to cancel any changes.

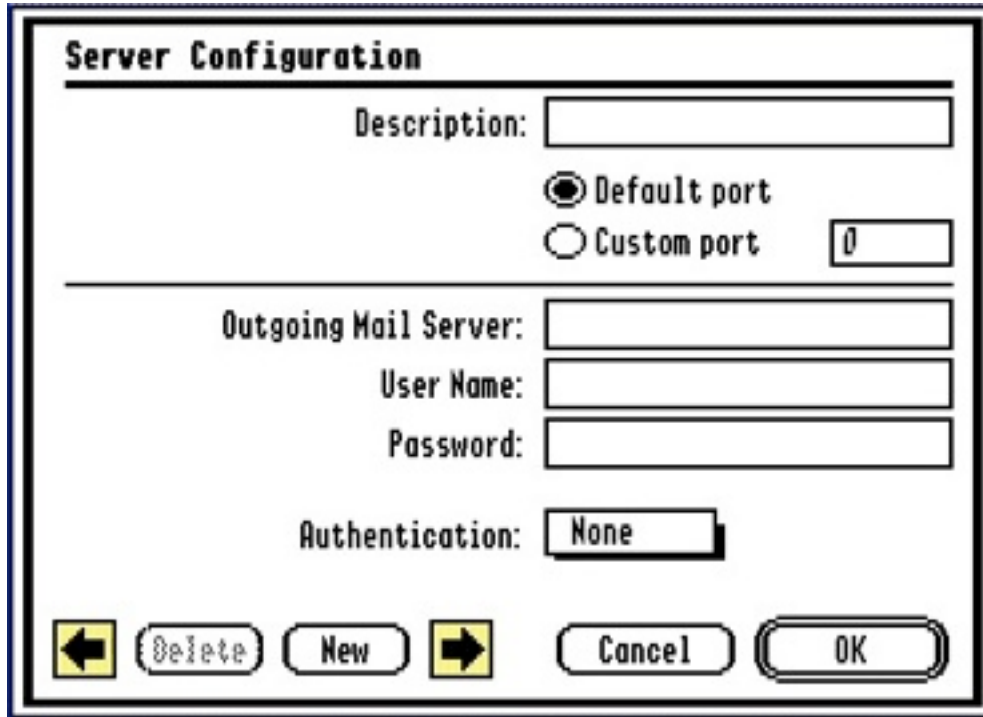
The Account Configuration window shows the main account details. This includes the settings for the POP3 server you use to read mail. SAM2 keeps a separate list of SMTP servers for sending mail. Both entries are required, but by separating the two lists, you are free to link whichever SMTP server you like to a particular POP3 account.

If you have not yet entered any accounts, there is no need to click the New button, just start with the empty account shown above. If however you have already created an account, then to add a further account, you will need to click

---

the New button. This saves the current entry, confirming for any changes, then clears the boxes ready for you to enter the new account.

If you have not yet defined any SMTP Servers, you will need to create at least one, and select it from the server popup before you can proceed:



The image shows a 'Server Configuration' dialog box with the following fields and controls:

- Description:** A text input field.
- Default port:** A radio button that is selected.
- Custom port:** A radio button that is unselected, followed by a text input field containing the number '0'.
- Outgoing Mail Server:** A text input field.
- User Name:** A text input field.
- Password:** A text input field.
- Authentication:** A dropdown menu currently showing 'None'.
- Navigation buttons:** A left arrow button, a 'Delete' button, a 'New' button, a right arrow button, a 'Cancel' button, and an 'OK' button.

#### **Options Menu - Server Configuration:**

Your ISP will give you the details of your POP3 mail server, but will also give you the details of the SMTP server used for sending mail. You can create as many configurations of SMTP servers as you have access to.

If an SMTP server does not require authentication, leave the Authentication popup as 'None', and leave the 'User Name' and 'Password' boxes empty. If a server requires authentication, select Password from the popup, and then enter your details in the two boxes. SAM2 will use the 'PLAIN AUTH' authentication protocol wherever possible.

Before you can save an entry, create a new entry, or move to edit another entry, you will be asked to confirm any changes that you have made. If you do not want to save any changes, just press the Cancel button.

In most circumstances, servers will use the Default SMTP port 25, but if your server requires a custom port, then enter the number in the box, and select the Custom port button.



---

## Account Configuration in detail

### Description:

The description is used locally within the Account Configuration window, and in the action Log files. It can be any name you like that describes this account.

### Email:

Enter the email address that will be used in the 'From', or return field, of a message. This address will also show in the popup of a New Mail message, thus allowing you to choose which account you wish to send the message from.

Note that most ISPs servers will only accept addresses that are in their database of subscribers, and may reject a message if they do not get a match.

### Full name:

This will show in the 'From' field of a message, together with the Email address. It will show in this format. Note that there must be an '@' in the address:

From: Ewen Wannop <[spectrumdaddy@speccie.uk](mailto:spectrumdaddy@speccie.uk)>

### Incoming Mail Server:

Enter the address that your ISP gave you for their POP3 mail server. It will look something like this:

mail.mac.com

### User Name:

Enter the user name that your ISP gave you to access your mail account. It should not have any spaces in it, but may have underlines:

spectrumdaddy

### Password:

Enter the password that your ISP gave you. This password, along with the User Name, gives you access to your account. The password will not echo on screen, and will be encrypted before saving to disk:

\*\*\*\*\*

### Outgoing Mail Server (SMTP):

Select an entry from the popup. If you have not yet defined any servers, select '*Edit Server List*' from the popup, and refer to the section on Server Configuration.

---

**Enabled checkbox:**

SAM2 can only use active accounts to send and receive mail, but can keep inactive accounts for later use. Check the box to make an account active.

**Delete On Read checkbox:**

To keep messages on the server after they have been retrieved, uncheck this box, otherwise they will be deleted from the server once they have been received into the local Inbox.

SAM2 will attempt not to retrieve a message that has already been received, but depending on how your POP3 mail server behaves, you may find that you keep getting the same message over again. You may be able to change this behaviour from the web interface to your mail account. If not, check this box, so the message will be deleted after SAM2 reads mail.

**Remove All Mail Now button:**

If you have left messages on the server, this will delete all of them, including any unread messages. You will be asked for confirmation before you can proceed.

**New button:**

Saves the displayed account, and opens a new blank account on screen. You will be asked to confirm any changes you may have made.

**Delete button:**

Deletes the displayed account. You will be asked to confirm the action. Note that by making an account inactive instead, you can always reactivate it later, and of course can then edit the password or make any other changes that are needed.

**Arrow buttons:**

If you have more than one account configured, use the arrows to move between each one. It will ask you to confirm any changes you may have made.

**OK button:**

Saves the displayed account, and closes the window.

**Cancel button:**

Cancel any changes, and closes the window.

---

## Server Configuration in detail

### Description:

The description is used locally within the Server Configuration window, and to build the popup in the Account Configuration window that you link to a POP3 account.

### Default & Custom port:

Most SMTP servers use port 25, the Default port. If your SMTP server requires a different port number, enter it here, and click the Custom port button.

### Outgoing Mail Server:

Enter the address that your ISP gave you for their SMTP mail server. It will look something like this:

`smtp.mac.com`

### User Name:

If the SMTP server requires authentication, then enter the 'User Name' your ISP gave you here. You must then select Password from the popup. SAM2 will use the PLAIN AUTH authentication protocol wherever possible.

If the SMTP server does not need authentication, then leave this box empty, and select 'None' from the popup. Note that if the server does not require authentication, it may still require you to have first read mail, so it can open a 'window' to let you send mail. In such a case, you may need to check the 'Send Queue After Checking Mail' box in the settings menu, and use 'Check Mail' from the menu, rather than 'Send Queued Messages'.

### Password:

If the SMTP server requires authentication, then enter the 'Password' the ISP gave you. Note that the password will not show on screen, and will be encrypted before it is saved to disk. Leave empty if authentication is not required.

### Authentication:

Select either None or Password as appropriate. See above more details.

### Delete, New, Arrows and other buttons:

Refer to the Account Configuration section for more details on these buttons.

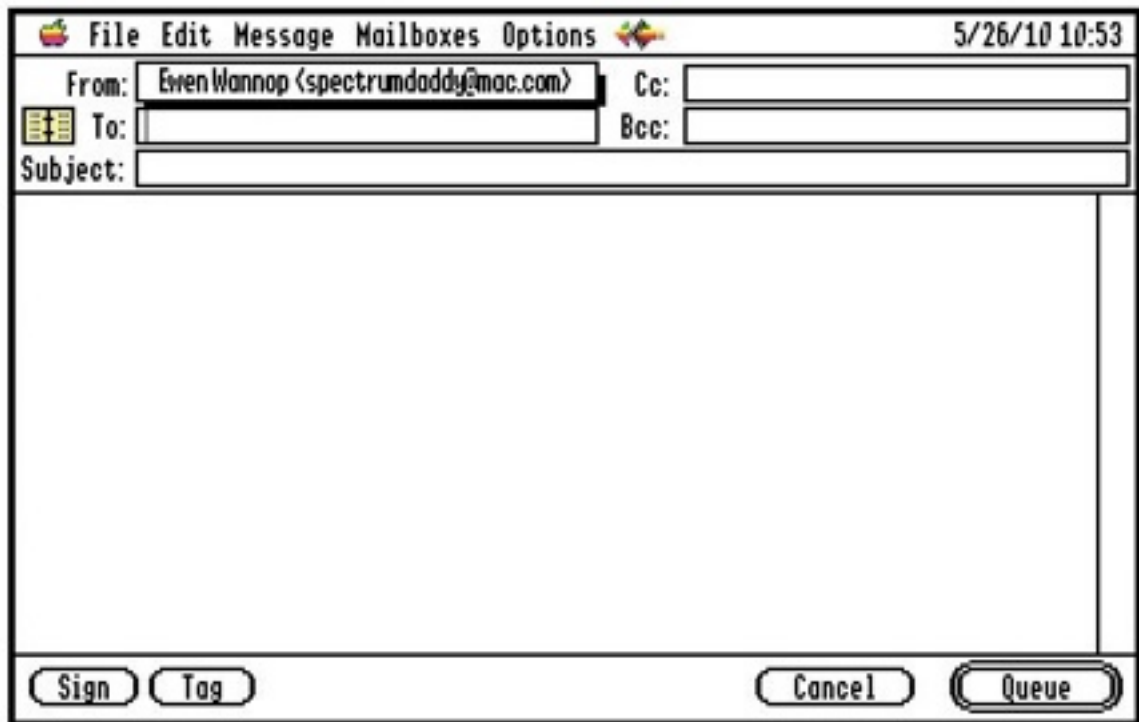
---

## Composing Messages

Before you can prepare a new mail message with SAM2, you must have at least one active mail account.

### New E-Mail message:

Selecting this menu, brings up the New Mail window. You open the same window if you Reply to a message, or edit a message from the Outbox:



### From:

Select the account you wish to use for this email from the popup menu. Note that only active accounts will be listed in the popup.

### To:

Enter the email address, or addresses, that you are sending the mail to, separating each address by a comma. There is a limit of 255 characters you can enter in the boxes, so if you wish to send to more recipients than will fit in the space, you will need to create an Address Book entry, and use that instead.

Refer to the 'Address Book button' entry, and the 'Edit Address Book' entry, for more details on how to create an Address Book entry.

The addresses in this box will be seen in the From: field of the message.

---

**Cc:**

Enter the email address, or addresses, that you are sending the mail to, separating each item by a comma.

These addresses will be seen in the Cc: field of the message.

**Bcc:**

Enter the email address, or addresses, that you are sending the mail to, separating each item by a comma.

These addresses will not be seen in the the received message. Use the Bcc: field if you wish to send a copy of a message to a recipient, without the main recipients knowing. You could use this field to send a copy to yourself if necessary.

**Subject:**

Enter the subject line of up to 255 characters for this message.

This line will be seen in the Subject: field of the message.

**Address Book button:**

An Address Book entry is an easy way to enter single or multiple email addresses that you might use often. You can enter a large number of addresses by this method. Click the Bookmarks button to show a list of the entries, and select the one you want to use. The shortcut will be expanded when the message is sent.

You will see an Address Book entry in the line like this:

[My friends]

**Sign button:**

If you have created a Signature file, then click this button to insert the Signature into the message.

**Tag button:**

A Taglines file is provided with SAM2. Clicking this button will insert a random entry from that file.

**Cancel button:**

Cancels the message. If you have entered any addresses or message text, you will be asked to confirm that you really want to cancel the message.

---

**Queue button:**

This will queue the message for sending. If you wish, you can later review and edit the message before it has been sent from the Outbox.

**Message field:**

Enter the text of the message in the main window. There is no limit on how much text you can enter, other than running out of memory. You can use the normal Cut, Copy and Paste functions, which allow you to paste in text from another application if you wish.

**Menu Options:**

There are various menu options available to you while composing mail:

Insert Text Files, Save As, Page Setup, Print, Select All, Show Clipboard, Find/Replace, Attach File, and Add to Address Book.

Some of these items are generic, and are referenced from other windows.

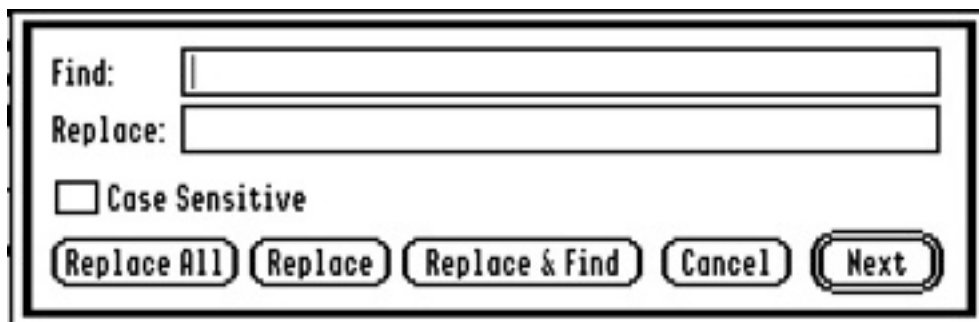
Please refer to the ‘General Functions’ section for more details on those not described here.

**Insert Text files:**

To insert the text of a text file, select this menu item. Find and open the file from the standard file dialog window, and the text will be inserted at the cursor point.

**Find/Replace:**

Opens a dialog:



Enter the search string in the top box, and an optional replace string in the bottom box. Choose from the various buttons what it is you would like to do.

Note that the global ‘Case Sense’ setting does not apply to these searches. If you need to make a case sensitive search here, check the box within the dialog.

---

## **Attach File:**

You can attach one or more files to send with a message. The files will be inserted at the cursor position, and will show in the message as an icon with the file name in brackets something like this:

**This is an attached file:**

 <BASIC.System>

Only a reference to the file path is included within the message. The original file must remain in its original folder until the message has been sent. When the message is sent, the file will be inserted into the body of the message using the Base64 encoding format. Base64 encoding is understood by mail clients on all computer platforms. Note that if you send a file that has a resource fork, it will also be encoded using the AppleDouble format, which is usually only understood by Macintosh and IIGs mail clients.

Once a file has been attached, you can cut, copy, or paste the reference within the message, but make sure that if you do move or delete the reference, you select the entire reference, including the icon. There is invisible, but essential information embedded between the icon and the file name, which must either be present, or completely removed.

Note that if you select the entire reference, and press OA-?, you will open a window showing the full path name of the file. This can be handy if you are editing the message later from the Outbox.

## **Add to Address Book:**

If you select a valid email address, this opens up a new entry window for the Address Book, allowing you to add it to the Address Book. Edit the address if necessary, and give it a name that will be used for the selection list.

Refer to the section on the Address Book for more details.

## **Babelfish™ Import:**

If Babelfish™ is installed, you can import text into the message through its interface. Depending on the filters that you have installed into Babelfish™, this allows you to import files that you may otherwise not be able to use. The text will be imported as plain text, and inserted at the cursor point. Any selected text will be deleted.

---

### Babelfish™ Export:

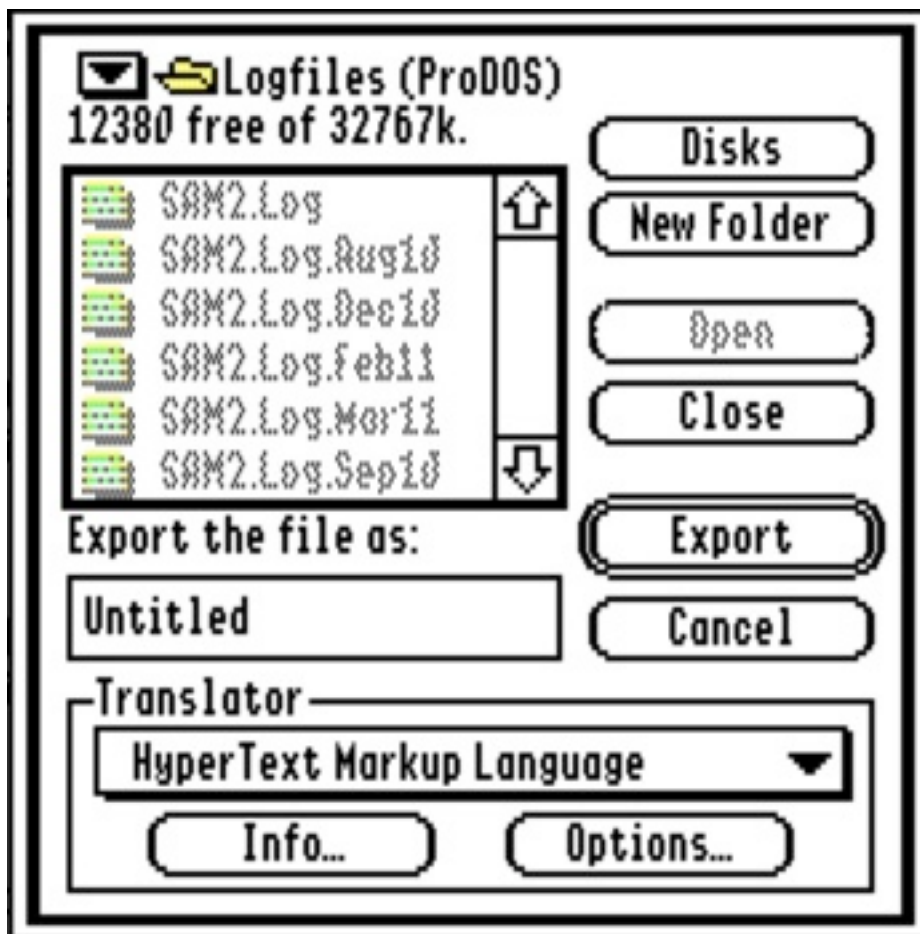
If Babelfish™ is installed, you can export the message text through its interface. The entire message is exported, and will be saved in whatever format is available through the filters that have been installed.

### Spell Check:

If the NiftySpell NDA is installed, you can spell check selected text, or the entire window. Refer to the NiftySpell instructions for more details.

### Note:

Any styled or formatted text pasted into a message from the clipboard, or imported through Babelfish™, will be sent as plain text. This may produce results that you do not expect, especially if the source was from a message that had been displayed as HTML.





---

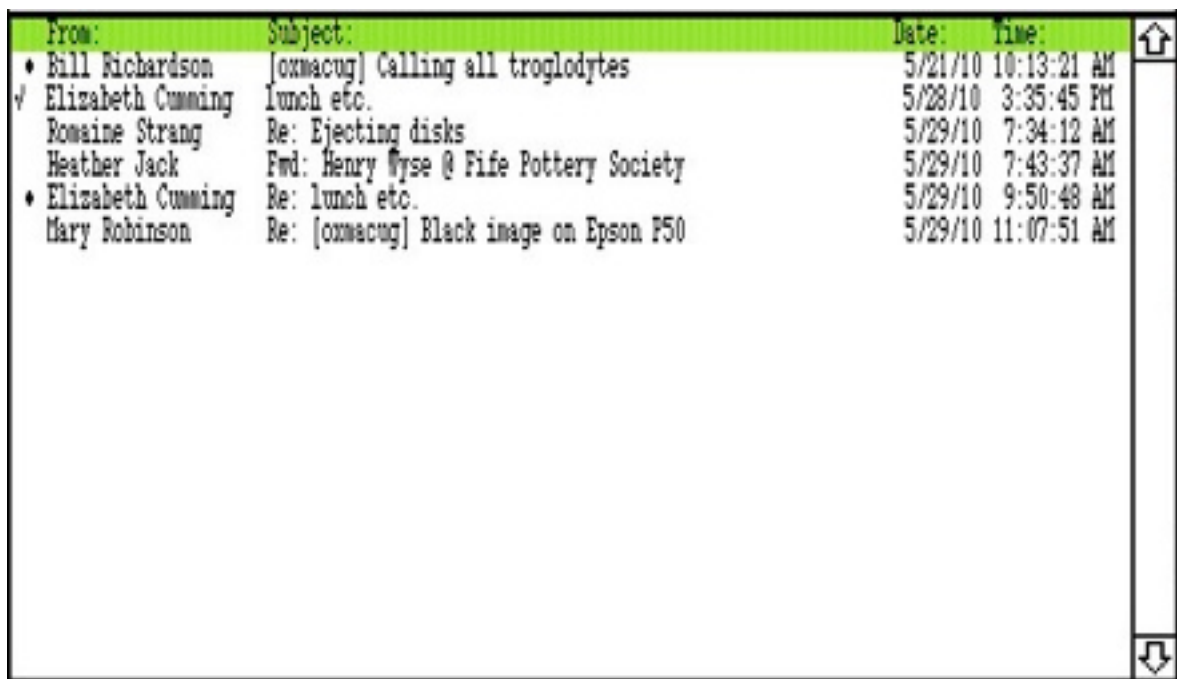
## Reading Messages

Received messages are either placed into the main Inbox, or if you have active Filters, and the message matches a Filter rule that you have set, are placed into the assigned Inbox in the Folders sub-menu.

The title name of an Inbox will show a diamond mark to its left if there are any unread messages in that box.

### Inbox List:

Opening either the main Inbox, or one of the named Inboxes in the Folders sub-menu, shows a list of the received messages in that box. Messages that are unread show a diamond mark in the left hand column, and messages that have been replied to, show a tick mark:



From:	Subject:	Date:	Time:
♦ Bill Richardson	[oxmacug] Calling all troglodytes	5/21/10	10:13:21 AM
✓ Elizabeth Cumming	Lunch etc.	5/28/10	3:35:45 PM
Romaine Strang	Re: Ejecting disks	5/29/10	7:34:12 AM
Heather Jack	Fwd: Henry Wyse @ Fife Pottery Society	5/29/10	7:43:37 AM
♦ Elizabeth Cumming	Re: lunch etc.	5/29/10	9:50:48 AM
Mary Robinson	Re: [oxmacug] Black image on Epson P50	5/29/10	11:07:51 AM

### Open Message:

Either double click an entry, or select 'Open Message', to read a message.

### Delete Message:

To delete messages, select a single message, or multiple messages, then select 'Delete Message' from the menu. You will be asked to confirm that you want to delete the message or messages.

---

### **Moving messages:**

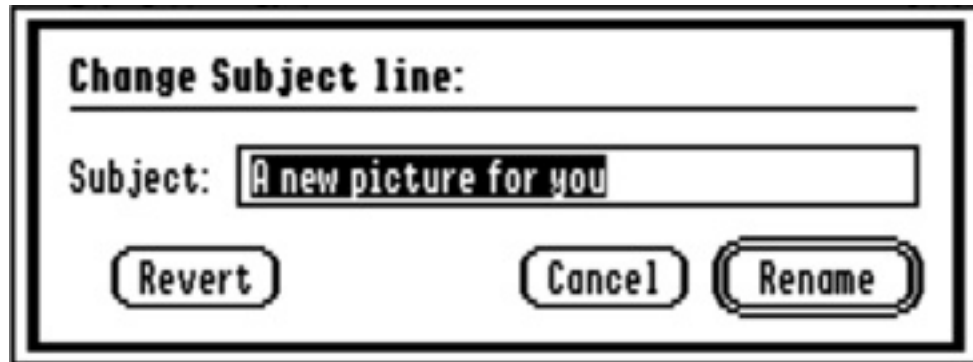
To move a message, or messages, to another Inbox, select the messages you want to move, and then choose the destination Inbox from the menu or the Folders sub-menu.

### **Mark as Junk:**

This will move the message to the Junk Folder, and create a Filter from the 'From:' and 'Subject:' fields of the message. The Filter will be set to search the 'From:' field, and will be named with the current time. It should be edited to fine tune it. See the section on Filters for more details.

### **Changing the Subject:**

While viewing a message list, select any entries who's Subject line you would like to rename, select 'Change Subject' from the Message menu:



Enter a new name, and press the 'Rename' button. The dialog will close, and the message will be renamed. If the 'Revert' button is active, then you can change back to the original Subject line by pressing that button.

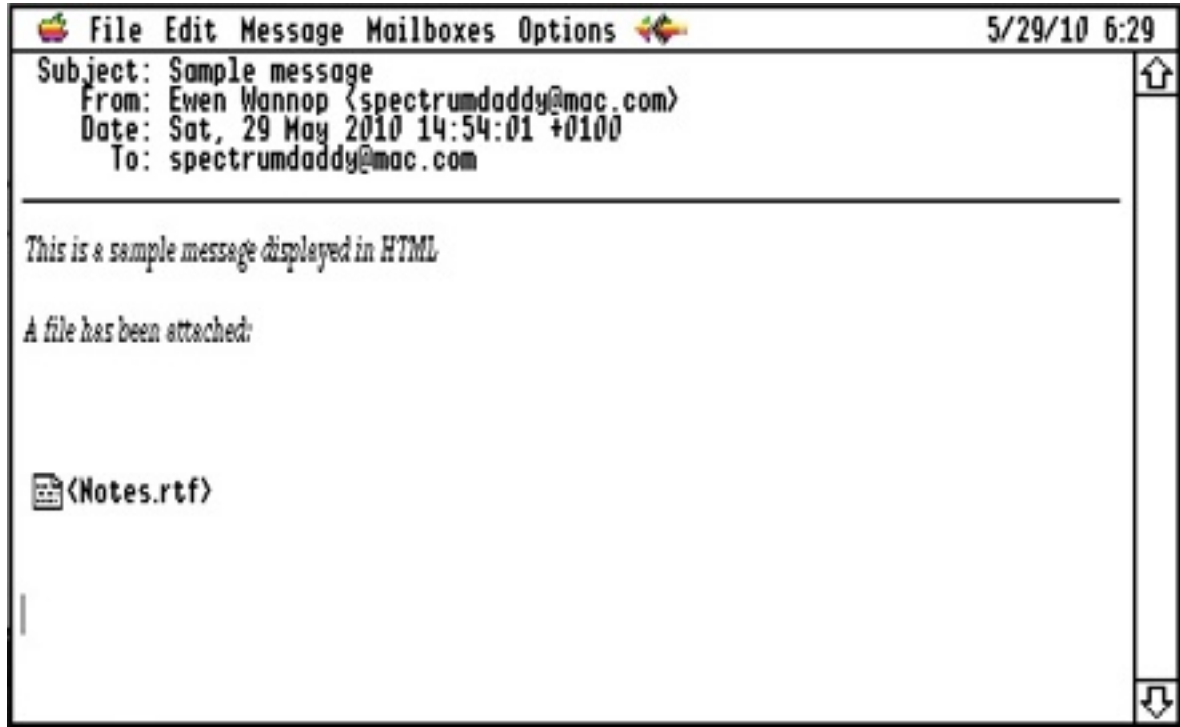
If you had selected more than one message, then the Subject line for the next message will be shown after pressing either the 'Revert' or 'Rename' buttons.

Note that the embedded Subject line of the original message is not changed, only the display in the Inbox lists and the displayed message. If you view the raw message, using OA-U, then it will display its original Subject line.

---

## Message Window:

Opening a message displays the message in the read window:



## Menu Options:

There are various menu options available to you while reading mail:

Save As, Page Setup, Print, Show Clipboard, Find, Reply To, Reply To All, Forward Message, Redirect Message, Extract Attached Files, and Add To Address Book.

Some of these items are generic, and are referenced from other windows.

Please refer to the 'General Functions' section for more details on those not described here.

## Find:

Opens a similar window to that shown while Composing Messages, but with only a Search field.

Note that the global 'Case Sense' setting does not apply to these searches. If you need to make a case sensitive search here, check the box within the dialog.

---

### **Selecting Text:**

With both of the Reply options, and with the Forward and Redirect options, any selected text will be used for the reply. If no text has been selected, the entire text will be used.

All the various options bring up the New E-Mail Message window, with the selected text, and the appropriate To:, Cc:, and Subject: fields filled in. Fill in any other fields as required, and then edit and Queue the message to send.

### **Reply To:**

Uses the Reply To:, and Subject: fields from the original message, and quotes the selected text.

### **Reply To All:**

Uses the Reply To:, Cc:, and Subject: fields from the original message, and quotes the selected text.

### **Forward Message:**

Uses only the Subject: field, and quotes the selected text from the original message.

### **Redirect Message:**

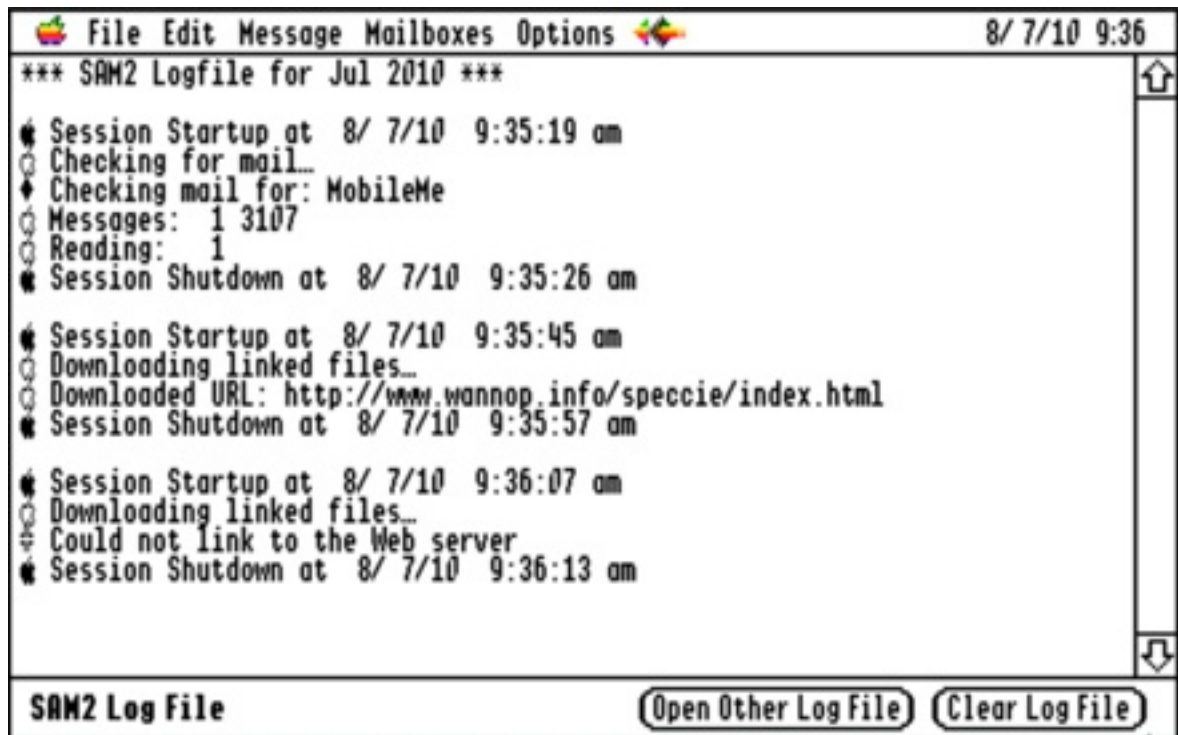
Uses only the Subject: field, with the unquoted text from the original message.

### **Babelfish™ Export:**

If Babelfish™ is installed, you can export the message text through its interface. The entire message is exported, and will be saved in whatever format is available through the filters that have been installed.

### **Extract Attached Files:**

If there are any attached files in the message, this menu item will be active, and selecting it will extract any embedded files to the Downloads folder. If the embedded file name is unsuitable, or the file already exists, you will be asked to give a new name.



### Download Linked File:

Select a valid URL by double clicking it, and then select the ‘Download Linked File’ menu item. SAM2 will download the linked file from the host web site to a folder of your choice. Choose the folder to save to, and when the file has been downloaded, an Alert will tell you whether the download was successful or not.

The URL must be valid, and in this format:

[http://www.a\\_website.com/a\\_folder/a\\_file](http://www.a_website.com/a_folder/a_file)

### Add To Address Book:

If you select a valid email address, this opens up a new entry window for the Address Book, allowing you to add it to the Address Book.

Refer to the section on the Address Book for more details.

### While viewing a message:

You can use the following keyboard shortcuts: OA-H, OA-M, OA-U, OA-?

Refer to the section on Keyboard Shortcuts for more details.

---

## General Functions

There are some general functions that apply to many of the windows, and they are described here.

For details on the Address Book and Filters, refer to the Advanced Features section.

Note that many menu options have keyboard equivalents.

### Select All:

Selects the entire text from either an entry field, or a message.

### Save As:

Saves the text from the window to a text file. Select the file name and destination from the standard file dialog window.

### Page Setup:

Opens the standard dialog for the printer you have chosen in the Direct Connect Control Panel.

### Print:

Opens the printer dialog for your chosen printer, and prints either the selected text, if none has been selected, the entire text.

### Show Clipboard:

Opens the Clipboard window, and shows you any text that is currently on the Clipboard.

### Show Log:

Opens the current Log file. This is rotated each month. You can open old files from the window, and if you wish, clear the contents of the current log file:



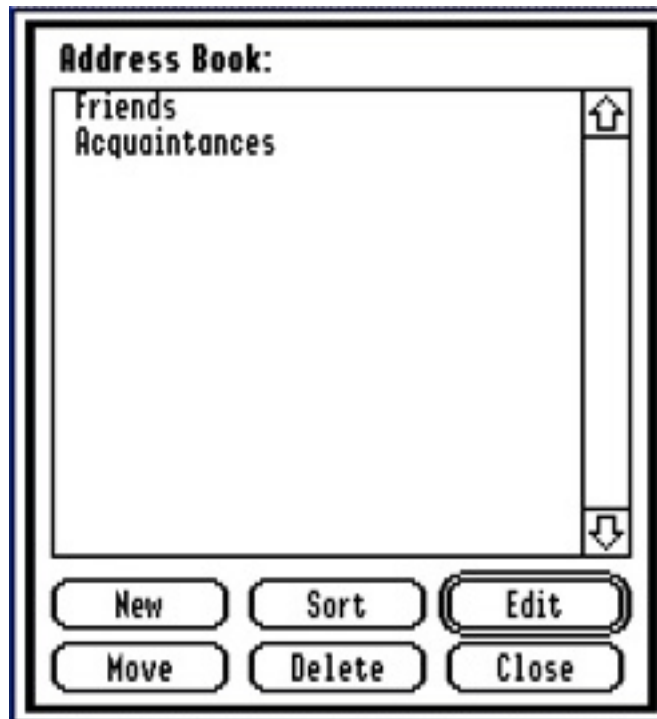
## Advanced

---

# Advanced Features

## Edit Address Book

It is often impractical to remember lots of complicated email addresses, or you may just need to keep lists of addresses, rather than have to type them in every time. The automated Address Book will do this for you.



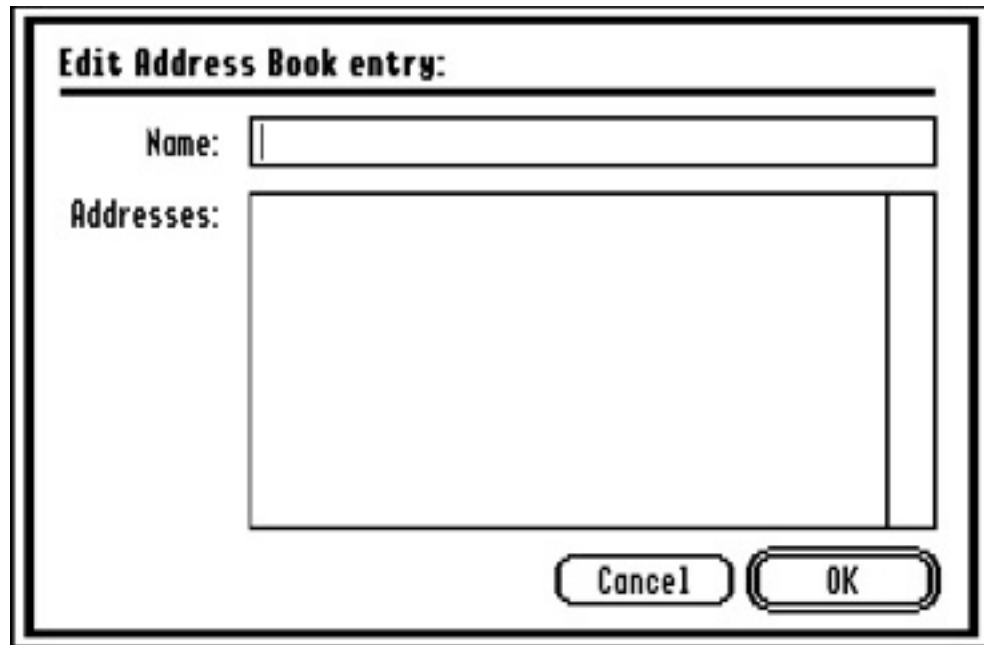
Each Address Book entry can hold as many addresses as you like. Create and edit the entries from the main Address Book window.

To move an entry, first select the item to move, click the Move button, then click where you want the entry to go, and then click the Move button once more.

Double click an entry, or click the Edit button to edit it.

---

When you click the New or Edit buttons, or select Add to Address Book from one of the other windows, you will open the Edit Address Book window:



### Creating an entry:

The Name description is used for the list in the main window, shows in the To:, Cc:, and Bcc: fields, and in the list you see when you click the Address Book button in the New Mail window.

Put the address or addresses in the bottom box, separating each by a line break. No checks are made to verify the addresses are valid, so you need to be careful when you enter them. There is a limit of 100 recipients to any email message, so be careful when later using any Address Book entry if it has a number of items.

The addresses can be in either the plain address format, or have the Full Name preceding the address in angle brackets:

[spectrumdaddy@speccie.uk](mailto:spectrumdaddy@speccie.uk)

Ewen Wannop <spectrumdaddy@speccie.uk>

When you select an item from the Address Book while composing mail, only a reference to the entry is placed in the address field. This entry will then be expanded when the message is sent. Both an Address Book entry, and a normal address, would show like this:

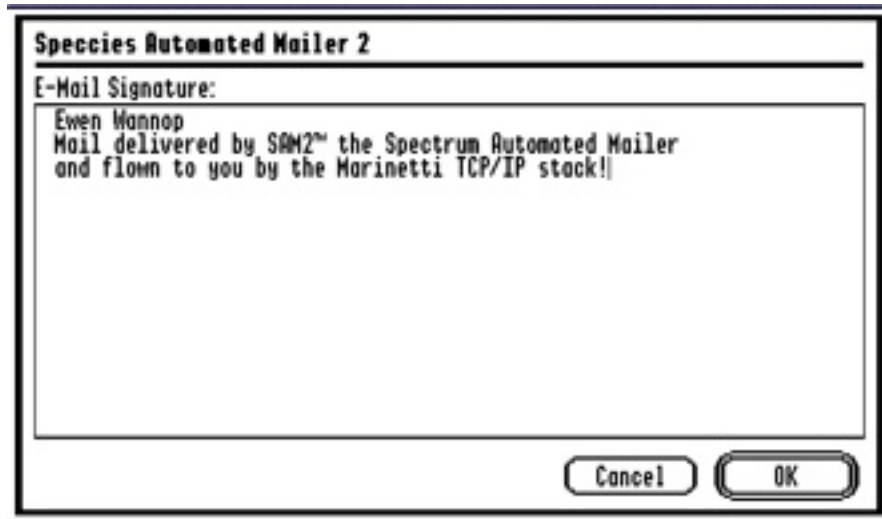
[My friends],Ewen Wannop <spectrumdaddy@speccie.uk>



---

## Edit Signature

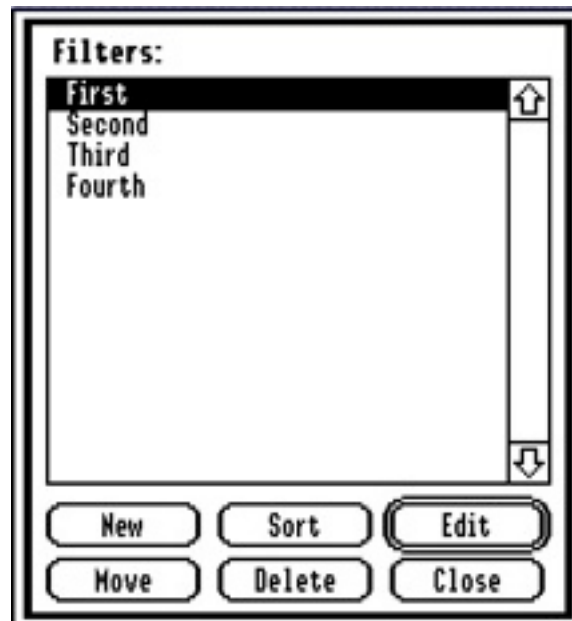
Enter your signature exactly as you want it to appear. Do not wrap lines, and make sure all but the last line ends with line breaks:



The Signature will be saved to disk when you click the OK button, and will be inserted into an email when you click the Sign button in the New Mail window.

## Edit Filters

Filters are very powerful, as they allow you to sort mail as it arrives into various mailboxes. You create, and sort the order of Filter entries from a list window:



---

**Edit Filter entry:**

Move To: **Inactive** Name: \_\_\_\_\_

Any rule Rule 1: \_\_\_\_\_

All rules Rule 2: \_\_\_\_\_

From: Rule 3: \_\_\_\_\_

To: Rule 4: \_\_\_\_\_

Cc:

Subject:

Not in Address Book

Cancel OK

### Creating a Filter entry:

You can have as many filter rules defined as you like, but be aware that if you have too many active filters, it may slow up the time it takes to check mail.

Filters are checked in turn, so be careful how you set them up. For instance, if you wanted to put all the messages from people that are not in your Address Book into a Junk or Spam folder, if that Rule was checked before a Rule looking for a Subject line, it might miss an important message from someone that is not in your Address Book.

The Name field will appear in the Filters list window, where you can reorder the items to suit the sequence that you want the rules to be checked in.

You can define up to four Rules, or text strings for each filter, which will be matched according to the button settings to the left. If a match is made, then the message will be put into the Inbox that you selected from the popup menu. If a Rule box is left empty, it will be ignored.

If 'Any rule' is selected, then any of the four strings can cause a match. If 'All rules' is selected, then all the Rules must be found for the Filter to match.

Note that the global setting for Case Sensitive searches will be used. Note also that if an Inbox Folder that has been chosen in a Filter is subsequently deleted, it will effectively inactivate that Filter. You will be warned if that is the case, so you can reset the Filters accordingly.

---

## Edit Folders

SAM2 lets you file away your messages into specific categories using mailbox folders, either manually, or through the use of Filters when the messages arrive.

SAM2 allows you to create as many mailbox folders as you like. Each folder is given a name that will show in the menus, Filters, and the Folders list, and a second name that will be used to name the actual folder itself. Only the actual Folder name needs to suit the disk operating system where the folders will be created.

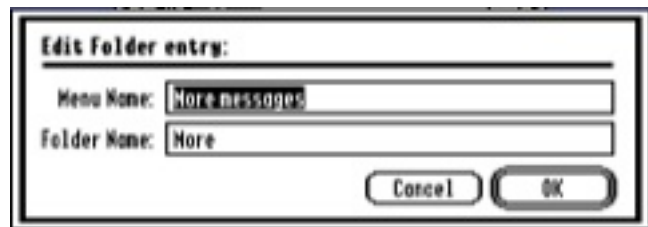
Note the 'Junk' folder cannot be deleted, though its menu name can be changed.

If you later delete a folder entry, you will be asked if you wish to delete the Folder itself,

or just its Menu entry. If you delete the Folder as well as deleting the Menu entry, it will delete any messages that are in that folder. If however you only delete the Menu entry, the messages and the folder will remain, allowing you at a later date to create a new Menu entry for that folder, and so access the messages once more.

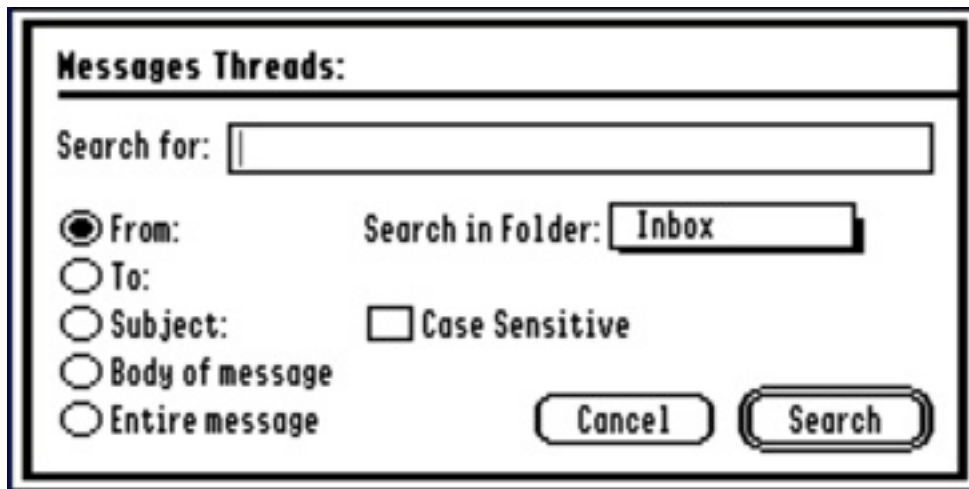
You will be told the folder already exists if you use its name again, so you can decide then if that is really what you want to do.

Note also that if you delete a Menu entry for a folder that is in use by a Filter, you will be warned, and have the opportunity to edit the Filters to point to another folder. If you ignore that warning, that Filter will be made inactive.



---

## Message Threads



From time to time, you may wish to search for old messages that contain specific text, or perhaps sort messages into threads from either the From:, To:, or Subject: line. SAM2 lets you search on both the header field, and within the body text of messages in any of your mailbox folders. Enter the search string, select the field you would like to search, and finally select the target mailbox folder.

If any matches are found, the messages, or threads, will be shown as a mailbox list, where you can read, and work with the messages, just as if you had opened that particular mailbox folder normally.

If you first create a suitable set of Folders, you can move one or more of the messages from the found list into a designated Folder. This makes it easy to file your mail to suit any of the search criteria.

Note that searching either the Body of a message, or the Entire message, will take the longest, depending on the number of messages that are in that folder and of course the speed of your Hgs.

Note that the global 'Case Sense' setting does not apply to these searches. If you need to make a case sensitive search here, check the box within the dialog.

---

## Editor

SAM2 provides a basic text editor to help you prepare messages, or work with files you may have downloaded or saved from messages you have received. You can insert and work with both plain text, and Teach files, but when you save out as a file, SAM2 will only save the text as a Teach file.

If an inserted plain text file contains the <HTML> tag, the entire file will be parsed as HTML. By holding down the Closed Apple or Option key when you click the Open button, the file will be displayed in its raw state.

If NiftySpell or Babelfish™ are installed, they will be available from the Editor.

### Choose font

You can change fonts, sizes, and attributes of selected text.

### Note:

Any styled or formatted text generated from the Editor, when pasted from the clipboard, or inserted into a message you are composing, will be sent as plain text. This may produce results that you do not expect, especially if the source was from a message that had been displayed as HTML.

Note that if you change to a different font, any coloured text will be changed to black and white. If you need a more powerful text editor than SAM2 provides, please consider using the one built in to Spectrum™.

Note many of the General functions are available while in the Editor.

Use the NiftySpell NDA to spell check your documents!

## General Note

SAM2 uses the Spectrum Database XCMD file structure for many of its files. This allows greater flexibility in handling data generated from within SAM2. It also speeds up access, and speeds up message handling. The various Inboxes as well as the Outbox, use a database file that holds the message headers, and a link to a text file with the body of the message. It is important for the proper operation of SAM2, that you do not move, or delete, any of the files that SAM2 generates.

The exception to this rule are any files that get placed in the Downloads folder, or files that are generated in the Logfiles folder.



# Appendix



---

## Glossary

### TCP/IP

Transmission Control Protocol/Internet Protocol, describes a method of transmitting packets of data over a network. Each packet contains addressing and sequence information. This allows the route the data takes to be flexible.

[http://en.wikipedia.org/wiki/Internet\\_Protocol\\_Suite](http://en.wikipedia.org/wiki/Internet_Protocol_Suite)

### Link Layer

Part of the TCP/IP protocol, which handles the interface with the Internet Layer and the Network. Marinetti supports a range of Link Layers from Direct Connect, through SLIP to Ethernet.

### POP3

Post Office Protocol 3, describes the method of retrieving mail from a server.

[http://en.wikipedia.org/wiki/Post\\_Office\\_Protocol](http://en.wikipedia.org/wiki/Post_Office_Protocol)

### SMTP

Simple Mail Transfer Protocol, describes the method of sending mail to a server.

[http://en.wikipedia.org/wiki/Simple\\_Mail\\_Transfer\\_Protocol](http://en.wikipedia.org/wiki/Simple_Mail_Transfer_Protocol)

### Port

Each server requires a specific port to be opened to allow data to be transferred. Using ports allows a common IP Address to handle many different services.

### ISP

Your Internet Service Provider provides you with your connection to the Internet, either through a DSL broadband, cable, or dialup modem connection.

### IMAP

Describes an improved method of accessing mail accounts.

[http://en.wikipedia.org/wiki/Internet\\_Message\\_Access\\_Protocol](http://en.wikipedia.org/wiki/Internet_Message_Access_Protocol)

---

## SSL

Secure Socket Layer describes a method of encrypting the transferred data to give a high level of security.

[http://en.wikipedia.org/wiki/Transport\\_Layer\\_Security](http://en.wikipedia.org/wiki/Transport_Layer_Security)

## AUTH PLAIN

Describes a simple method of authentication, often used by SMTP mail servers.

<http://www.rfc-editor.org/rfc/rfc4616.txt>

## MTU or Packet Size

The Maximum Transmission Unit, describes the size of packet used by the TCP/IP protocol.

[http://en.wikipedia.org/wiki/Maximum\\_transmission\\_unit](http://en.wikipedia.org/wiki/Maximum_transmission_unit)

## User Name & Password

Used to login into your POP3 or SMTP mail accounts.

## Case Sensitive

Text can be in UPPER CASE or lower case. Searches made with SAM2 can be set to ignore the case of the text during a search, or can be made to respect it.

## Links

To obtain SAM2, NiftySpell, Babelfish™, the HTML Tool, the Uthernet Link Layer, and any of my other software:

<http://speccie.uk>

To obtain the latest version of the Marinetti TCP/IP stack:

<http://www.apple2.org/marinetti/>

To order an Uthernet card:

<http://www.a2retrosystems.com/>

To subscribe to the Juiced.GS magazine:

<http://juiced.gs/>

To read all about the KFest conference:

<http://www.kansasfest.org/>

To shop for Apple II software:

<http://www.syndicomm.com/>