



Apple® IIGS

# The Webber Browser Reference Manual



Mark Webber Photo: Clive Mason - Getty Images

---

**Dedicated to the memories of Joe Kohn 1947-2010  
and Ryan Suenega 1967-2011**

Webber is Freeware and Copyright © 2021 Ewen Wannop

Webber and its supporting documentation may not be printed,  
copied, or distributed for profit.

Distributing and/or archiving is restricted while in an electronic form.

Any “free” distribution must be given permission by Ewen Wannop  
in advance -- please contact via email by sending mail to:

[spectrumdaddy@speccie.uk](mailto:spectrumdaddy@speccie.uk)

There is no guarantee that the right to redistribute this material  
will be granted. The contents of this document may not be  
reprinted in part or in whole.

### **Credits**

My thanks go to Chris Vavruska who helped me develop Webber,  
and especially for his extensive beta testing, and many suggestions.



# Contents



---

## Preface

Welcome to Webber	4
Background	4
Introduction	4
What Is Webber	5

## Setup

Requirements	6
Installation	7
Legal	7
Contact	7

## The Menu

Quick Reference	8
Apple	9
File	9
Edit	9
Navigation	10
Bookmarks	10

## Working with Webber

The Main Window	11
The Tool Bar	12
The Navigation Stack	12
Home Page	13
Redraw	13
Search, Go, Print, Find	13
The Navigation Cache System	13
View History	17
Bookmarks	18

## Settings

Home URL folder & Reset Button	14
Cache Folder	14
Open with Home URL	15
Do not check for updates at startup	15
Check for web page updates	15
Large Text	15
Enable Proxy	15
Debug Command Requests & Payload Data	15
Save Button	16
Proxy Settings	16
Cookies	20

## Extras

Page Gallery	22
Problems	24
Other Information	24

---



## Preface



---

# Welcome to Webber

## Background

Back at my first KansasFest in 1996, during one of the infamous “late night sessions”, Geoff Weiss explained to a small group of onlookers how the Internet operated using text commands. I had been involved in telecommunications software for many years, and for me, and others in the group, it was a “light-bulb” moment. As a result, Richard Bennett agreed to write what became the Marinetti TCP/IP stack, I wrote an HTML XDisplay engine for Spectrum™, and Geoff Weiss wrote the necessary Spectrum™ scripts and XCMDs to create the Spectrum™ Internet Suite script set, or as it was better known, SIS.

## Introduction

Over the years, the HTML engine evolved into a number of forms, finally ending up as HTML Tool 130, a Tool that could be used by any application. For instance, I use the HTML Tool in SAM2 to display any emails that contain HTML code.

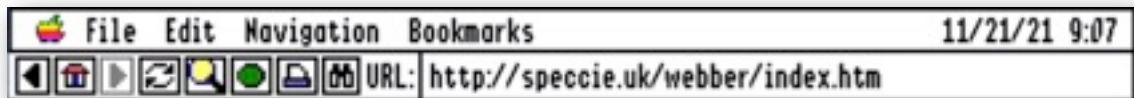
Recently I fixed a number of bugs in the HTML Tool, expanded many of its existing features, and have added some important new calls, HTMLGetPage, HTMLPostForm and HTMLCacheControl. The Tool as originally designed only allowed you to take the raw HTML from a web page, parse it into a suitable TextEdit display, and then display it in its own custom window. You could then interact with that custom window, and double-click the buttons and links.

With the addition of new calls, you can now Get a web page from the server, display as before, Post the results of any Forms that are contained in the page, and maintain a Cache of pages in your own browser. In other words, with only a few simple Tool calls, you can now easily create a full featured web browser.

To show what can be done, and to encourage others to create their own applications, I have built a powerful web browser Webber for the IIgs.

---

## What Is Webber



Webber is a web browser for the IIGs. Originally Webber was not intended to be as comprehensive as SIS, but has now grown into a full web browser. SIS is no longer supported by Geoff Weiss and myself, mainly because SIS does not allow double-clicked link interaction when using System 6.0.4, thus Webber was first created to show what can now be done with the now enhanced HTML Tool.

If you have ever used SIS, you may find the Tool bar in Webber rather familiar!

I hope that by giving you this browser, it will encourage other authors to build their own comprehensive web browsers using the now enhanced HTML Tool!

Like SIS, Webber can only deal with pages containing basic HTTP/1.1 tags. It cannot handle scripting or style sheets, and as the IIGs cannot yet handle HTTPS connections, there will always be a limit to the web pages that you can access.

The default Home page for Webber holds many links to information files for some of my software, and each of those pages hold download links for that software. There are also some links to other useful information pages as well.

That's right, not only can Webber browse web pages, but it can also download linked files as well!

Amongst many other features, this is what Webber can do for you:

- View web pages
- Send the results of interactive Forms
- Download files
- Display a custom Home page
- Navigation Stack with 256 Cached pages
- Search on both the displayed page and the Speccie.UK web site
- Print the displayed web page
- Display HTML files from disk
- Keeps a History of the pages that you have visited
- Keeps an optional log file transcript for debugging purposes
- Optionally Receive and Send Cookies



# Setup



---

## Webber Web Browser

### Requirements

Webber is a stand alone application, and requires a minimum of 1Mb of free memory, though as always, the more memory you have the better. As web pages can be complex, the faster your Hgs is, the better will be your experience.

Webber requires a TCP/IP connection through Marinetti 3.0b11 or later. Marinetti must be configured to access either your LAN, or the Internet, through one of its available Link Layers. Refer to the Marinetti instructions on how to get the appropriate Link Layer working for your preferred access.

It is recommended that you get the very latest version of Marinetti, as it is still in development, and bug fixes may have been made.

The HTML, Undo Manager, and Time Zone Tools are required. Copies of the Tools are provided with the Webber archive, just drop Tools 130, 132, and 056 into the System/Tools folder, the TimeZone CDev into the CDevs folder, then copy the entire contents of the Fonts folder to the System/Fonts folder and reboot.

Webber supports the CheckFile PIE, and if you have asked it to do so in Settings, it will check for updates to Webber automatically at startup.

To obtain Webber, Check File, the HTML Tool, the UNDO Manager, the Uthernet Link Layers, or any of my other software:

<http://speccie.uk>

To obtain the latest version of the Marinetti TCP/IP stack:

<http://www.apple2.org/marinetti/>

To find out about, and order an Uthernet card:

<http://www.a2retrosystems.com/>

---

## Installation

This is simplicity itself.

1. From the Archive folder, copy the Webber application into a folder of your choice, and copy the 27 special Fonts from the Fonts folder into the System:Fonts folder on your boot drive.
2. As you may have an older version of Tool 130 installed, please copy the latest Tool 130 from the Tools folder to the System/Tools folder.
3. If not already installed, copy Tool 132 from the UndoManager folder to the System/Tools folder.
4. If not already installed, copy Tool 056 from the TimeZone folder to the System/Tools folder, and the TimeZone CDev into the System/CDevs folder.
5. Now reboot your IIgs for the Tools you have copied to be started.
6. You are now ready to go. Fire up Webber, and start surfing the web!

## Legal

Webber is Freeware, and may be distributed freely, provided the archive stays intact, no alterations are made to it, and full attribution is always made to the author Ewen Wannop. Webber may not be sold in any form, but may be included in other distributed archives, provided you first seek my permission.

Webber is Freeware and Copyright © 2021 Ewen Wannop

## Contact

For any communication relating to Webber or my other software, and for bug reports, or for technical support, please contact:

[spectrumdaddy@speccie.uk](mailto:spectrumdaddy@speccie.uk)

For my Home Pages, Spectrum updates, Spectrum itself, and all my other software:

<http://speccie.uk/>



# Menus



---

## Webber Quick Reference

### The Menu

#### Apple Menu

*About Webber*

#### File Menu

*Settings...*

*Load File...*

*Save As...*

*Page Setup...*

*Print...*

*Quit*

#### Edit Menu

*Undo*

*Redo*

*Cut*

*Copy*

*Paste*

*Clear*

*Select All*

*Remove Colour*

*Find...*

*View History Archive...*

*View Page Source...*

*View Debug Log...*

*Clear Cache...*

*Clear Passwords...*

*Show Clipboard...*

#### Navigation Menu

*View Last Error...*

#### Bookmarks Menu

*Online Help...*

*Add Bookmark...*

*Edit Bookmarks...*



---

## Apple Menu

### About Webber

Opens a small window displaying the Webber Version number.

## File Menu

### Settings

Opens the Settings dialog, allowing you to configure Webber to your own needs.

### Load File

Opens and displays HTML and other files direct from the hard disk.

### Save As

Saves the current page as either a Teach or Text format file to disk.

### Page Setup

Standard dialog to set up page sizes etc. for your printer.

### Print

Prints the current display from either the main screen, View History, View Page Source, or the View Debug Log windows.

### Quit

Quits Webber.

## Edit Menu

### Undo, Redo, Cut, Copy, Paste, Clear & Select All

These commands are active within the LineEdit controls, View History, View Page Source, and View Debug Log windows.

Undo is not active within the interactive web page Form or Password boxes.

### Remove Colour

Changes the selected text, or the entire page, to black text on a white ground.

### Find

Finds a text string within the currently displayed window. Hold the Closed Apple key down to copy in selected text from the display.

### View History

View and edit the History files, or open a URL you had previously viewed.

### View Page Source

View the HTML source of the current page, and optionally Save to a text file.

---

## View Debug Log

If a Debug.Log file has been saved, this displays its contents. You can edit the log and “Save” it back to disk, and to clear the log, press the “Clear” button. If the text has been cleared, the file will be deleted from disk, and the window closed.

## Clear Cache

Will clear either the current page, or the entire Navigation Stack, along with their related Cache files.

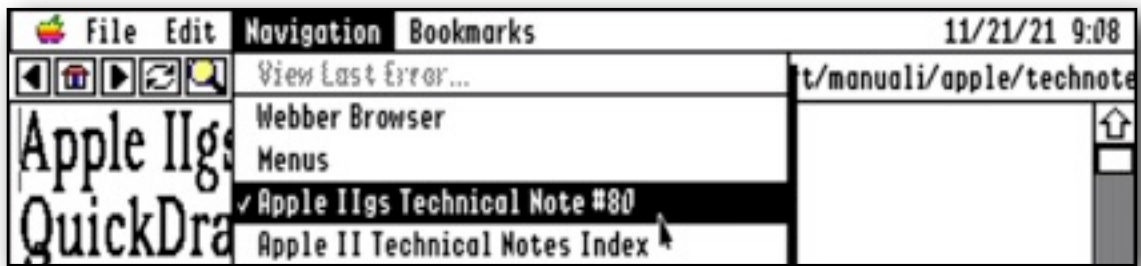
## Clear Passwords

Will clear any saved passwords.

## Show Clipboard

Displays the contents of the Clipboard.

## Navigation Menu



Lists the pages in the Navigation stack for quick page selection, with the current page “Ticked”.

If the server returns an error page, it can be viewed by selecting “View Last Error” from the Navigation menu”.

## Bookmarks Menu

### Online Help

Opens the Online Help pages for Webber.

### Add Bookmark

Adds the selected text, or an underlying link, to the Bookmarks menu.

### Edit Bookmarks

Allows you to Edit or Delete, any of the 32 Bookmarks.

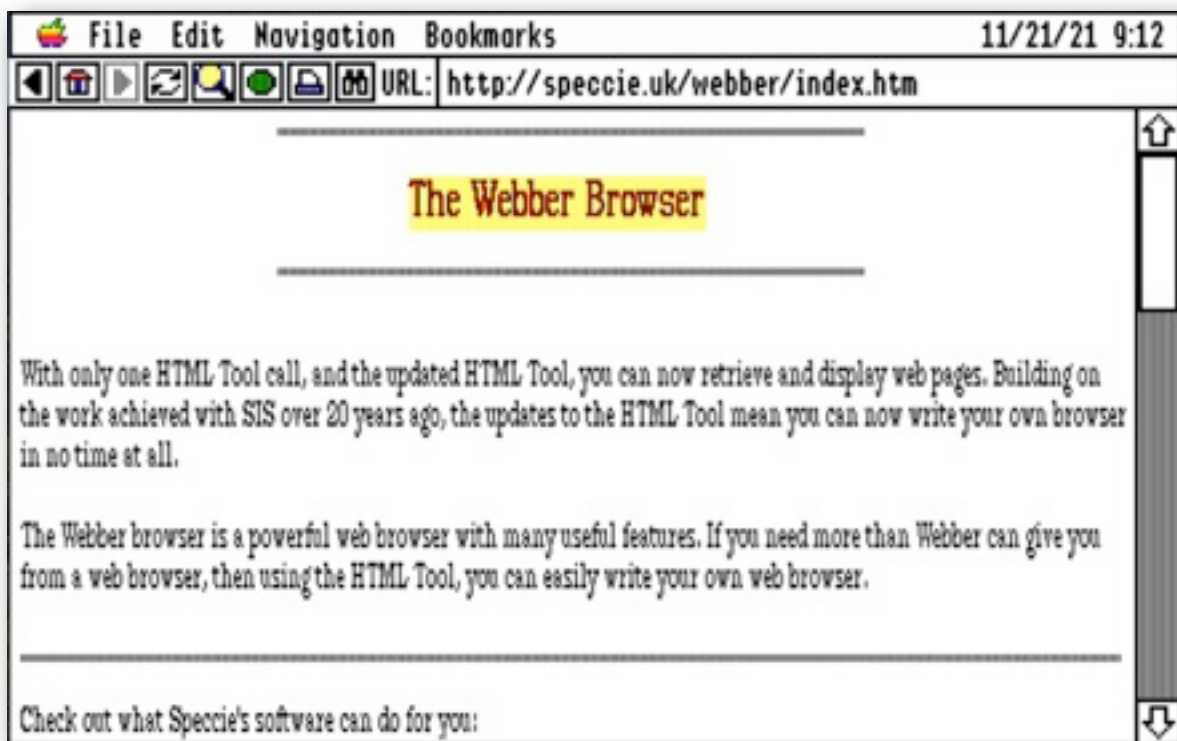
### Custom Bookmarks

Displays the Bookmarks that you have created from the Bookmarks menu.

# Basics

## Working with Webber

### The Main Window



The main window has a Tool bar at top left, and a LineEdit at top right.

To view a web page, enter the URL into the LineEdit, and then either click the Green “Go” button in the Tool bar, or press the **Return** key.

After the page has been downloaded and parsed, you will see the web page displayed on screen. Bear in mind that there are limitations with the HTML interpretation on a IIgs display, so some pages may not look as they were intended, or as they would display in Macintosh or Windows browsers.

---

## The Tool Bar



Reading from left to right:

Back button - Goes back one page in the Navigation Stack

Home button - Opens the default Home page

Forward button - Goes forward one page in the Navigation Stack

Redraw button - Downloads and redraws the current page

Search button - Opens the online Search page

Go button - Download and Displays the URL entered in the box

Print button - Prints the current page

Find button - Finds a text string within the current page

## The Navigation Stack

Webber keeps track of the last 256 pages it successfully opened in Cache files referenced from the Navigation Stack. Each time you open a new page, it will be added to the top of the Stack.

Navigate through the Stack using the Back and Forward buttons, and if necessary, press the “Go” button to redraw the page when you have found the page you want. You can also jump directly to pages using the “Navigation” menu.

If you were part way through the stack when you call up a new page, the new page will be added after the current page, and it will become the end of the stack. All entries beyond the current page will be lost.

Pages will be recovered and drawn from their Cache as you move back and forth in the Navigation Stack. If you call up a new page that is already in the stack, the page will be redrawn and displayed from its Cache file, and will display at the end of the stack. This is very much quicker than having to download and redraw pages from the web server. If necessary, use the Redraw button to download and update a page.

If however “**Check for web page updates**” is checked, and an updated page is found, it will be downloaded, displayed, and its Cache file updated.

---

## Home Page

Opens the default Home page. You can change the default Home Page from the Settings dialog, and can also reset it back to the original URL if necessary.

## Redraw

Downloads and refreshes the current page being displayed.

## Search

Opens a “**FreeFind**” Search page, which lets you search for items on the “`speccie.uk`” web site.

## Go

This downloads and displays a URL entered into the Line Edit box. You can also use the **Return** key instead of the “**Go**” button. If the URL is the same as a page that is already in the Navigation Stack, it will be drawn from there.

## Print

Prints the current display. The Webber display uses custom fonts, so these will be filtered or substituted as necessary when printing PostScript to a LaserWriter or SweetPrinter. If the “Font Substitution” checkbox is checked, it will output the entire text as 10pt Helvetica. Printing can take some time, so please be patient.

## Find

Opens a search box. Enter a text string to search for in the currently displayed window. Any selected text will be copied to the box. Searches on visible text only.

## The Navigation Cache System

The **Cache** files are kept in their own folder, with the default folder being in the same folder as Webber itself. You can change the **Cache** folder to another disk or another folder if you wish. This allows you to keep individual sessions separately, and be able to select them as needed by choosing the **Cache** folder in Settings.

All pages you view have a **Cache** file that is saved to the current **Cache** folder. The size of the **Cache** file can be anything from 300 bytes to 64K or more, depending on how much text, Links, or Forms, make up the page. Make sure the disk where you have placed the **Cache** folder has sufficient space to store up to 256 files of at least 10K each.

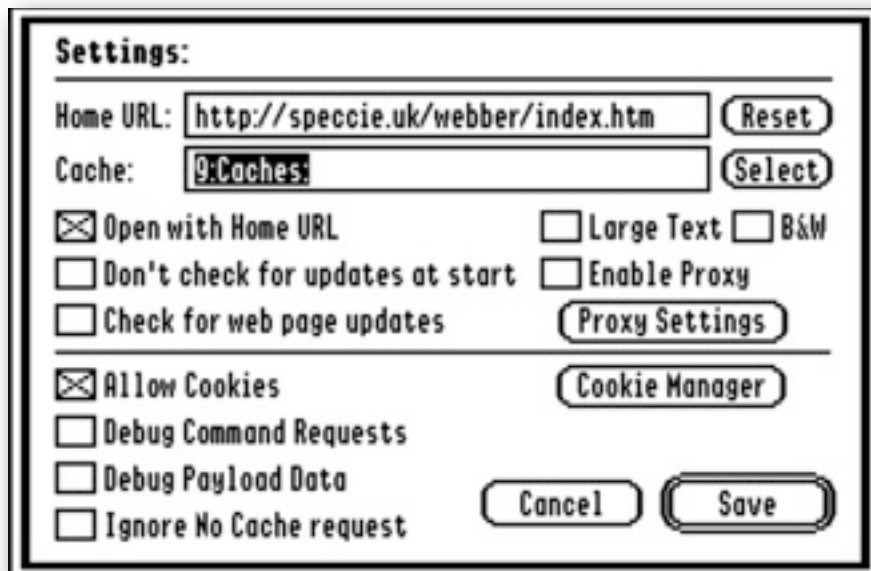
---

A **Cache** file holds the URL of the page, the entire TextEdit content of the page, and any **Form** data from the page. This allows a page to be redrawn very quickly from disk as you navigate through the stack. As you move from page to page, this means the **Cache** file will restore not only any edited Form data for that page, but the cursor selection as well.

If the web server supplying a web page has asked that page not be cached, the cache file will only hold the page and form data while **Webber** is open, and it will need to be downloaded again the next time you open that page in **Webber**.

At any time, you can delete the current page, or the complete Navigation Stack, using “**Clear Cache**” item from the Edit Menu. Hold Closed-Apple and click “**Clear Cache**” to clear the Navigation Stack, all the Cookies, and the Log File.

## Settings



### Home URL folder

Enter the URL that you want to use for your custom **Home** page. Press “Reset” to restore the default home page: <http://speccie.uk/webber/index.html>

### Cache folder

Use the “Select” button and Select inside the folder you want to use as the **Cache** folder. This can be anywhere you like on disk, other than the top directory of a disk, but please choose a disk that has plenty of free storage space for the files.

**Note:** The **Cache** folder could contain more than 5Mb of files, depending on the size of the pages you loaded, and how many pages are in the Navigation Stack.

---

## **Open with Home URL**

If checked, when Webber starts up, it will always open the default **Home** page.

## **Don't check for updates at start**

If checked, Webber will not try and call “**Check File**” to see if there any updates when it starts.

## **Check for web page updates**

If checked, as you navigate through the pages, a check will be made to see if the page has been updated, and if so, it will be downloaded and redrawn.

## **Large Text**

If checked, uses a minimum size of 12 point for the text in the HTML displays.

## **B&W**

If checked, downloads pages as Black&White. Same as “**Remove Colour**” does.

## **Enable Proxy**

If checked, Webber will use a Proxy connection to the server. You must enter at least a Proxy Address in the Proxy Settings for the connection to be made.

## **Allow Cookies**

Check this box to allow Webber to receive and send Cookies. Cookies can be turned off at any time, and you can edit any Cookies you may have received using the “**Cookie Manager**”. Refer to the section on **Cookies** to see how that works.

## **Debug Command Requests**

Check this box so Webber keeps a log of the incoming and outgoing header data in the Debug.Log file saved in the “**Webber.Data**” folder. If you are having problems with a web page being opened, the Debug.Log file may give you clues as to why you are having those problems.

## **Debug Payload Data**

Check this box to save the incoming and outgoing payload data to the Debug.Log file when you open or post a web page. The payload data will hold the raw HTML of the page that is be displayed. As this data can be quite large, and is often less useful than the headers, only turn this option on if necessary.

## **Ignore No Cache request**

This setting is OFF by default, so pages are not saved when the server requests they should not be cached. If your IIGs is slow, or you handle large pages that

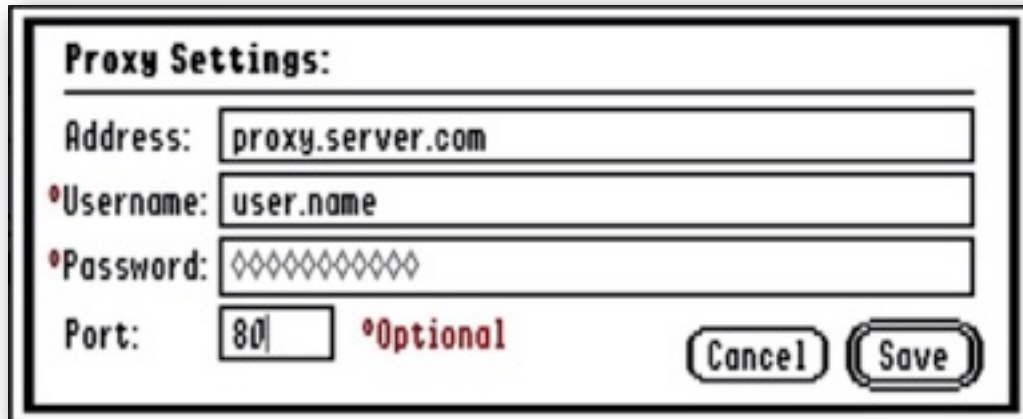
---

need to be reloaded as you move through the navigation stack, turn this setting ON to speed up the pages being redrawn. The page will be cleared from the navigation stack at Quit, so after a restart, it will need to be reloaded once more.

## Save Button

Saves the Webber Preferences as “Webber.Prefs” to the “Webber.Data” folder in the Webber folder. You can delete this file if you wish, as Webber will create a new Preferences file the next time it is started up.

## Proxy Settings



The image shows a dialog box titled "Proxy Settings:". It contains the following fields and controls:

- Address:** A text box containing "proxy.server.com".
- \*Username:** A text box containing "user.name".
- \*Password:** A text box containing ten diamond symbols (masking characters).
- Port:** A text box containing "80". To its right is the text "\*Optional" in red.
- Buttons:** "Cancel" and "Save" buttons are located at the bottom right of the dialog.

Some users may need to use a Proxy connection to the Internet. A Proxy server will first divert all your web page requests through their server before requesting the actual pages from the Internet, and then passing the pages back to you.

Enter the Address of the Proxy server in the first box, and if the Proxy connection requires a login, the Username and Password in the next two boxes.

If the Proxy connection does not require a login, just leave both the Username and Password fields empty. If the two fields are empty, and the server does require Authentication, a popup will open on screen. Fill in the required values and then close the box or press Return.

Some free Proxy servers may let you login using ‘anonymous’ as a Username, and a valid email address as the Password.

The default Proxy Port is usually Port 80, but if the Proxy connection requires a different Port, enter that instead. The Port is entered as a decimal number.

Check the Enable Proxy box in the main Settings to turn the Proxy function On and Off. The settings will remain until you need to use them the next time.

**Note:** The Proxy Address should not have an HTTP:// or other prefix.

**Note:** If you need to find a Proxy server, this list may help:

<http://www.freeproxylists.net/>



---

## View History Archive



Webber keeps a record of every page you visit in an archive “**History**” file, kept in the “**Webber.Data**” folder. Each month, the current archive “**History**” file will be renamed with the month and year it was created, and a new archive “**History**” file will be started. Each day, a marker is added to the end of the last entry.

Where possible, if a “**Title**” was found within the HTML of a page when it was parsed, it will be added as a description on a line before the URL itself.

When you select “**View History Archive**” from the Edit menu, you will see the current archive “**History**” file displayed. Click the “**History File**” button to open and view any older archive “**History**” files that may have been saved over time.

If you place the cursor within a line holding a URL, and double-click, or click the green “**Open URL**” button, the entry will be moved from that position to the end of the file, the View History window will be closed, and the selected page will be opened in the main window.

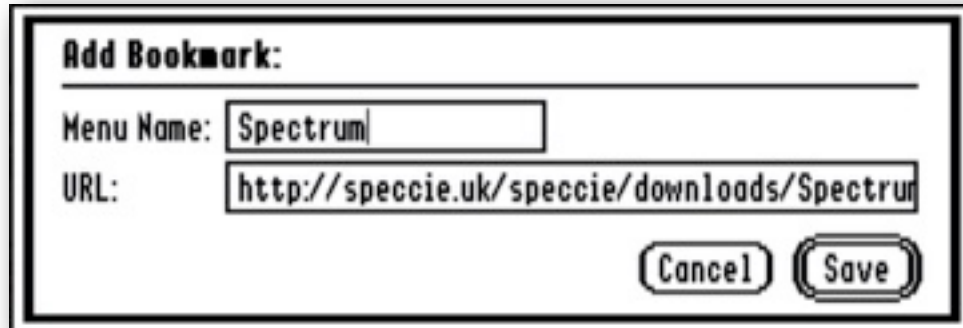
You can edit any of the entries if you wish, to change them or to remove any unwanted entries. When you click the “**Save**” button, the edited data will be saved back to the file, and the window will be closed.

Do not shorten the length of the header at the top of the file before the first Date, or you may not be able to select the first entry correctly if you later use the “**Open URL**” button.

---

## Bookmarks

Webber can keep up to thirty-two custom Bookmarks in the Bookmarks menu. These can either be added as a New Bookmark added automatically from a web page, or from the **View History** or **View Debug Log** windows.



The “Menu Name” will be used when building the Bookmarks menu, and can be up to twenty characters long. The URL must start with either “http://” or “file://”, and have no spaces within it.

Webber will attempt to “smart” select suitable text for the Menu Name depending on where you are adding the bookmark from.

If you are on the main screen viewing a web page, either place the cursor in one of the “**yellow**” clickable links, or in a blank space on the page. When you select “**Add Bookmark**”, it will prompt you with whatever link was in the “**yellow**” link, with its visible name as the menu prompt. If you are on a blank section of the screen, you will be prompted with the current page URL, and any embedded <title> from the page. If there is a full link in the main body of the page, you can select that text instead.

You can also add a URL from the LineEdit by placing the cursor in the box.

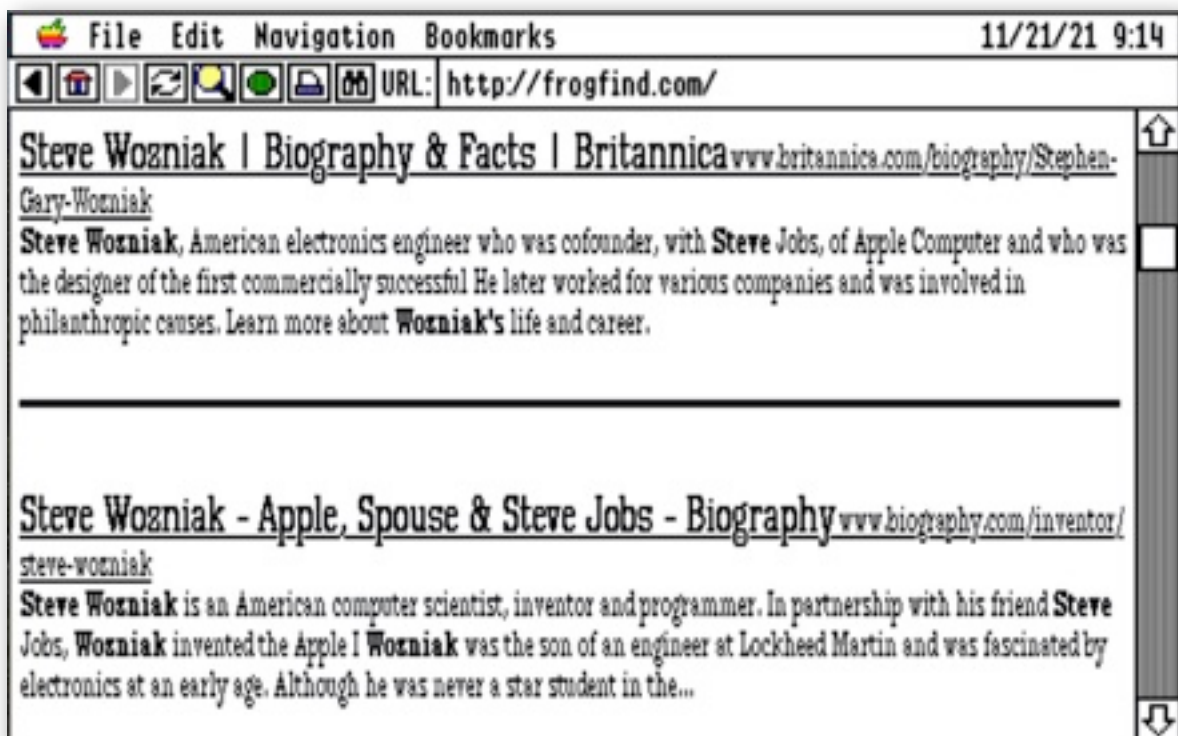
If you are in the “**View History**” window, place the cursor in a link, and click the “**Add Bookmark**” button. You will be prompted with the URL, and if there was a Title on the preceding line, will be prompted with that as the menu name.

If you are in the “**Display Debug Log**” window, select a valid URL, and click the “**Add Bookmark**” button.

To Edit a Bookmark, select “Edit Bookmarks”. A List will open showing all your Bookmarks:



Click “Edit” to Edit or “Delete” a bookmark, and click “New” to add a new bookmark. Click “OK” to close the window.



---

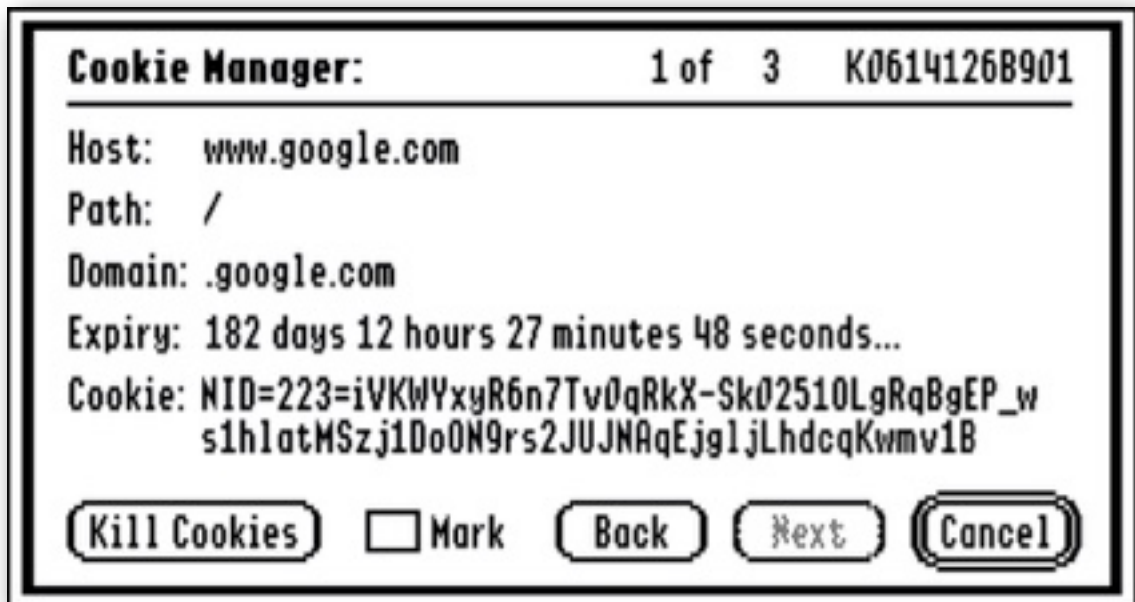
## Cookies

Cookies can be a contentious subject, as some web sites may use them for malicious purposes. Other web sites may just want to make your life easier by tracking what you may have been doing on their web site, so the next time you call in, you do not have to go through the same login procedures over again.

Cookies fall into two main categories, Session Cookies, and Cookies that have an expiry date. When you Quit Webber, any Session Cookies and expired Cookies will be deleted. Whenever a new Cookie arrives, it will be checked against any Cookies in the Cookies folder, and if they match an existing Cookie from the same web server, the newer one will be saved, and the older one deleted.

If you are happy to have Webber handle Cookies, turn them On in the Settings dialog, and sit back and enjoy what they can do for you. At any time, you can turn Cookies Off, and also at any time, you can open the “**Cookies Manager**”, to delete Cookies that you no longer wish to keep, or just to see what Cookies are there.

### Cookies Manager



The contents of each Cookie will be displayed, with its Host URL, any Path or Domain attributes it may have, and if it is not a session Cookie, its Expiry date. The current filename of the Cookie shows at top right, and the total number of Cookies to its left.

---

Navigate back and forth through the Cookies using the “Next” and “Back” buttons, and Mark any Cookies that you want to delete.

If you have marked any Cookies, the “Kill Cookies” button will ask if you want to delete just the “Marked” cookies, or “All of the Cookies”. If you have not Marked any Cookies, you will only be asked if you wish to delete “All the Cookies”.

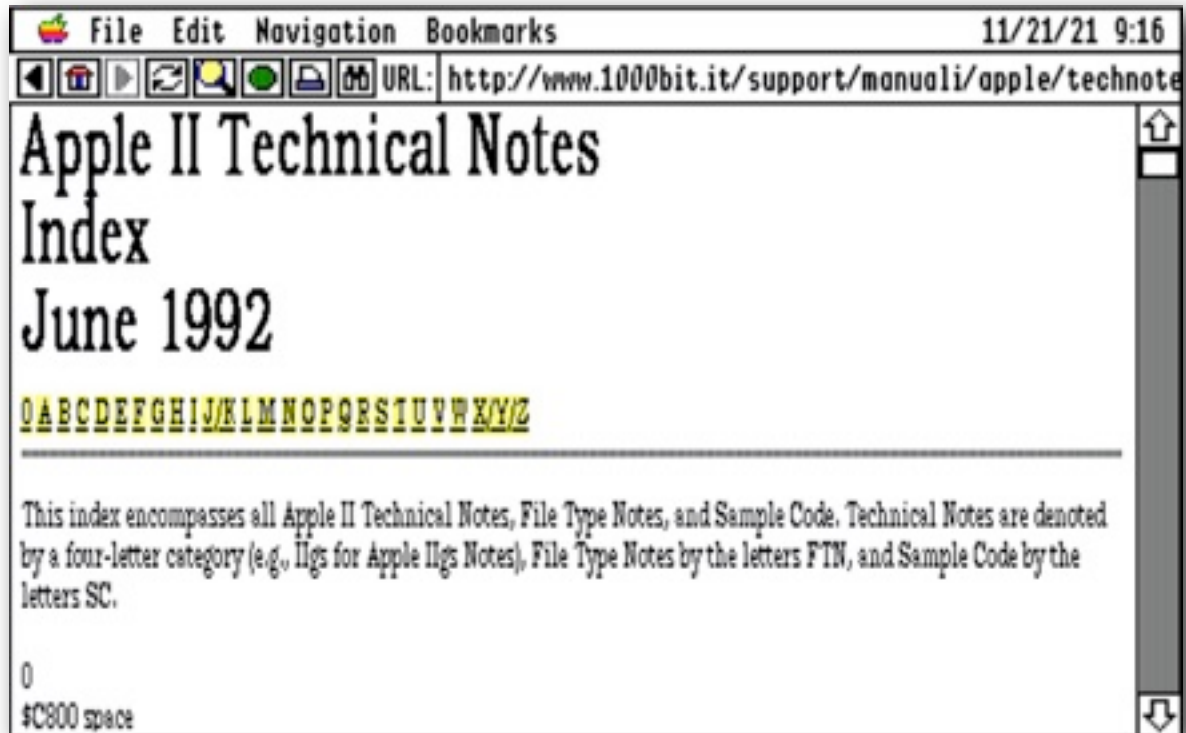
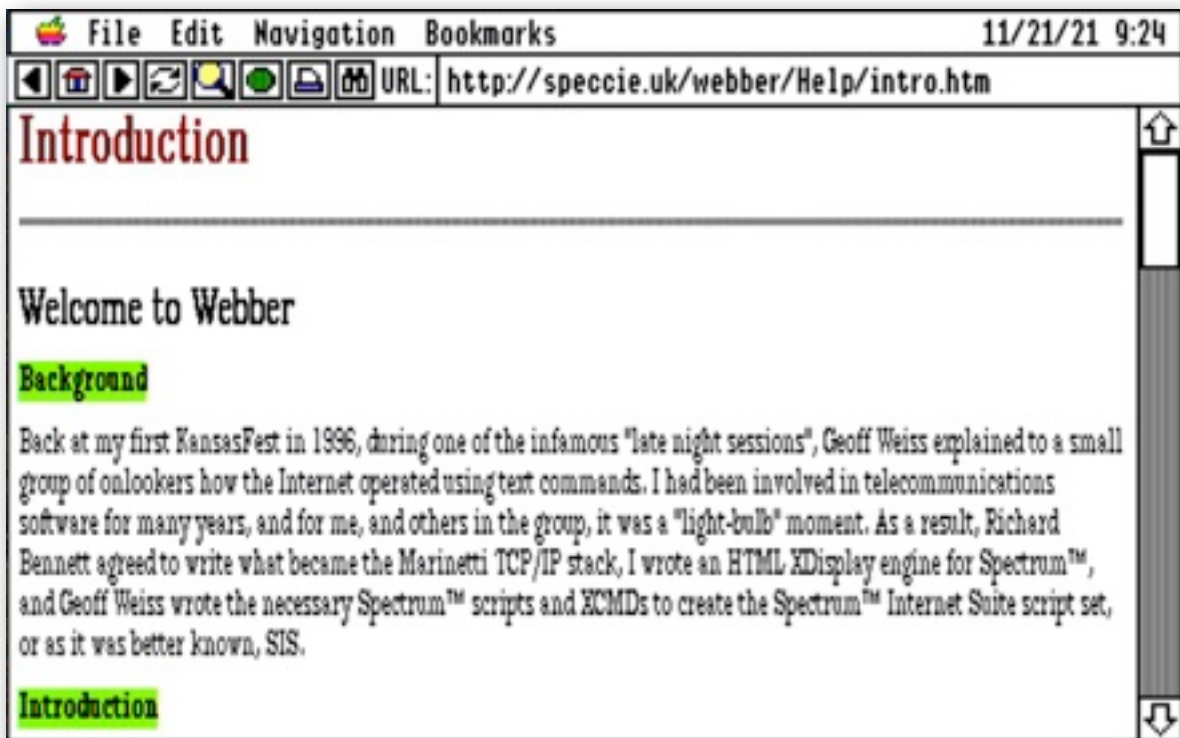
**Note:** If you have checked “Debug Command Requests”, any expired Cookies that were automatically deleted, will have the deletion shown in the Log file:

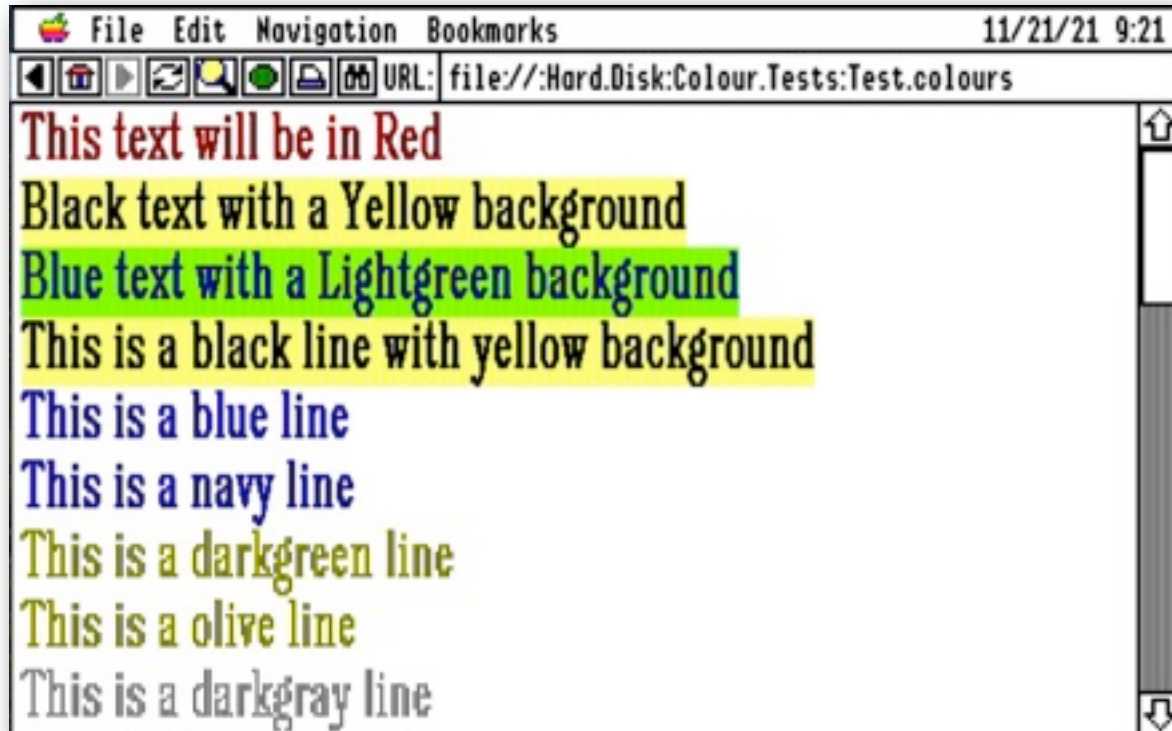
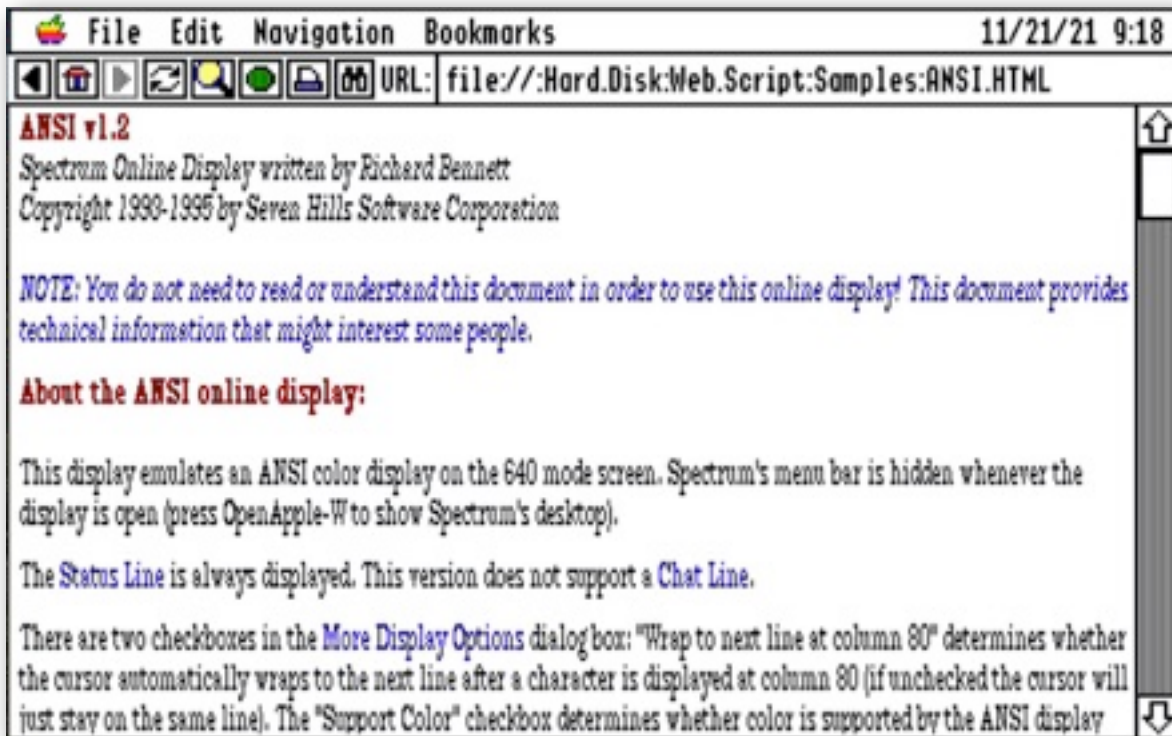
```
Cookie: K0614126B901  
Received from: www.google.com was deleted
```

**Note:** For Cookies that have an expiry date to be correctly expired on time, and not deleted prematurely or too late, it is important that you have set the Time Zone correctly in the TimeZone CDev, and that you have also told the Time CDev whether you are currently in Daylight Savings time or not.



## Page Gallery







# Extras



---

## Problems

If a URL gets in a mess, and Webber will not respond, and then won't respond when restarted, restart while holding down the Closed Apple key. This will allow you to start up Webber and call up new pages, without affecting existing settings.

Hopefully you will have no other problems, but if you do, and they cannot be answered by reading these notes, please contact me at:

[spectrumdaddy@speccie.uk](mailto:spectrumdaddy@speccie.uk)

## Other information

Check for the latest version of Marinetti:

<http://www.apple2.org/marinetti/>

If you do not already know about Spectrum™, please drop by my home pages, and read more. Apart from all the other wonderful things it does, Spectrum™ offers many useful tools for processing files, such as post processing text files that you have received that may have obstinate formatting.

Spectrum™ is now Freeware, and amongst my other applications, is now available from my web site:

<http://speccie.uk>

Someone once said to me, "Spectrum™ does everything!"

Webber © 2021 Ewen Wannop